

19 October 2020

At the conclusion of the Corporate, Finance, Properties
and Tenders Committee

Environment Committee

Agenda

1. **Disclosures of Interest**
2. **Project Scope - Woolloomooloo Playground Upgrade**
3. **Project Scope - Minogue Crescent Reserve Upgrade, Forest Lodge**
4. **Project Scope - Park on Lyons Road, Camperdown (Western Block) Upgrade**
5. **Project Scope - Tote Park Playground Upgrade, Zetland**

Disclaimer, Terms and Guidelines for Speakers at Council Committees

As part of our democratic process, the City invites members of the community to speak directly to Councillors during Committee meetings about items on the agenda.

Webcast

In accordance with the *City of Sydney Code of Meeting Practice*, Committee meetings are recorded and webcast live on the City of Sydney website at www.cityofsydney.nsw.gov.au.

Members of the public attending a council or committee meeting may have their image, voice and personal information (including name and address) recorded, publicly broadcast and archived for up to 12 months.

Consent

By attending a council or committee meeting, members of the public consent to this use of their image, voice and personal information.

Disclaimer

Statements made by individuals at a council or committee meeting, and which may be contained in a live stream or recording of the meeting are those of the individuals making them, and not of the City. To be clear, unless set out in a resolution of council, the City does not endorse or support such statements.

The City does not accept any liability for statements made or actions taken by individuals during a Council or Committee meeting that may be contrary to law, including discriminatory, defamatory or offensive comments. Such statements or actions are not protected by privilege and may be the subject of legal proceedings and potential liability, for which the City takes no responsibility.

Guidelines

To enable the Committee to hear a wide range of views and concerns within the limited time available, we encourage people interested in speaking at Committee to:

1. Register to speak by calling Secretariat on 9265 9702 or emailing secretariat@cityofsydney.nsw.gov.au before 10.00am on the day of the meeting.
2. Check the recommendation in the Committee report before speaking, as it may address your concerns so that you just need to indicate your support for the recommendation.
3. Note that there is a three minute time limit for each speaker (with a warning bell at two minutes) and prepare your presentation to cover your major points within that time.
4. Avoid repeating what previous speakers have said and focus on issues and information that the Committee may not already know.
5. If there is a large number of people interested in the same item as you, try to nominate three representatives to speak on your behalf and to indicate how many people they are representing.

Committee meetings can continue until very late, particularly when there is a long agenda and a large number of speakers. This impacts on speakers who have to wait until very late, as well as City staff and Councillors who are required to remain focused and alert until very late. At the start of each Committee meeting, the Committee Chair may reorder agenda items so that those items with speakers can be dealt with first.

Committee reports are available at www.cityofsydney.nsw.gov.au

Item 1.

Disclosures of Interest

Pursuant to the provisions of the City of Sydney Code of Meeting Practice and the City of Sydney Code of Conduct, Councillors are required to disclose pecuniary interests in any matter on the agenda for this meeting.

Councillors are also required to disclose any non-pecuniary interests in any matter on the agenda for this meeting.

This will include receipt of reportable political donations over the previous four years.

In both cases, the nature of the interest must be disclosed.

Item 2.

Project Scope - Woolloomooloo Playground Upgrade

File No: X025400

Summary

This report outlines the proposed scope of works for the upgrade of Woolloomooloo Playground located adjacent to Dowling Street and Pring Street, Woolloomooloo. Woolloomooloo Playground has been identified for renewal as part of the Stage 15 small parks and playgrounds improvement program.

The project brief is to refurbish the playground area, replace end of life equipment and soft-fall, provide a range of play experiences for children of different ages and abilities, and improve accessibility and circulation into and through the playground, as well as provide additional seating to the playground and associated landscape improvements. Opportunities have also been identified to remove walls and other visual barriers to create a more open and welcoming environment.

Draft concept plans were presented to the community between 20 July and 24 August 2020 and were exhibited on the City's website. Community feedback was broadly in support of the proposal with community suggestions to be incorporated into the Final Concept Design. These include a review of the Pring Street edge condition and provision of playground equipment.

The key principles of the proposal are to renew the playground to provide a local scale play space which maximises play opportunities for children of different ages and abilities, improve access in and around the park, increase activation and passive surveillance, improve lighting conditions and use simple, robust, high quality material which reflects the local neighbourhood character.

Recommendation

It is resolved that Council:

- (A) endorse the scope of work for improvements to Woolloomooloo Playground as described in the subject report and shown in the concept design as Attachment B to the subject report, for progression to relevant approvals, preparation of construction documentation, tender and construction; and
- (B) note the estimated project forecast as outlined in Confidential Attachment D to the subject report.

Attachments

- Attachment A.** Location Plan and Site Photos
- Attachment B.** Revised Concept Plan
- Attachment C.** Engagement Report
- Attachment D.** Financial Implications (Confidential)

Background

1. The City has an ongoing small parks and playgrounds improvement program for parks that are in need of upgrade or enhancement works, replacement of end of life equipment, and to provide appropriate facilities for local residents.
2. Woolloomooloo Playground is located adjacent to Dowling Street and Pring Street, Woolloomooloo.
3. The land is owned by the City of Sydney.
4. Woolloomooloo Playground was identified for an upgrade due to the playground's overall condition including: aging play equipment and soft-fall surfacing, limited range of play experiences and seating provision offered, poor integration and passive surveillance with adjacent park areas, and poor access in and around the playground. No works are proposed to the tennis court, basketball court or community garden.
5. During the 1930s-40s, tennis courts, a small playground and an amenities building were constructed on a 'vacant plot of land' between Dowling Street and McElhone Street. The amenities building was upgraded and extended in 1957 to include additional toilets, storage facilities and an assembly room with a stage. In 1982, the streets surrounding Woolloomooloo Playground were closed and rezoned; McElhone Street (between Pring Street and Sydney Place) changed from road reserve to residential, and both Dowling Street and Sydney Place were transformed into pedestrian plazas. Subsequently the park was re-designed with the amenities building removed and replaced. The park was later upgraded again in 1992, and in the early 2000's, a new playground, barbecue area and community garden were installed to the west of the tennis and basketball courts on what was previously a turf area.
6. The playground is characterised as a large, shaded and fenced neighbourhood playground catering for children of all ages. Planting is limited to one *Populus deltoides* tree. Access to the playground is via the picnic space which has a barbecue and small turf area surrounded by trees. The upgrade site is approximately 1,152m².
7. The existing play equipment includes a seesaw, a rocker, a spinner, a set of pull-up bars, two balancing beams, a toddler play structure with a ladder, tower and telescope, and two older child's play structures with slides and climbing nets. Seating within the play-space is limited.
8. The park is well used by a variety of community members for play, rest, relaxation and exercise, however some anti-social behaviour has been reported. The upgrade aims to improve access and amenity as well as safety.
9. An Indigenous Cultural Consultant has been engaged as part of this upgrade process, to ensure that the project contributes to recognising the City's Indigenous heritage, celebrating Aboriginal and Torres Strait Islander cultures in the public domain, and enriching local knowledge about the cultural landscape.
10. Consideration has been given to the provision of play equipment in surrounding parks within a 500m radius, to ensure a coordinated network of facilities that caters for a broad range of park users.

Draft Concept Design

11. A Concept Design was developed for the works and community consultation undertaken (refer to Attachment B).
12. The concept plan sets the overall layout. The key principles are:
 - (a) improve access and passive surveillance in and around the park;
 - (b) renew the playground to provide a local scale play space which maximises play opportunities for children 0-11+;
 - (c) provide a range of seating opportunities which encourage social interaction; and
 - (d) use simple, robust, high quality materials which reflect the local neighbourhood character.
13. The proposal includes the following works:
 - (a) a new open entry comprising of brick bleacher stairs and access path from Pring Street;
 - (b) a new fitness area with fixed equipment such as pull-up bars and dip bars;
 - (c) a new play structure with climbing and sliding components as well as imaginative play panels/elements;
 - (d) a new double swing set with one toddler seat and one swing for all ages;
 - (e) new soft-fall across the play area. Soft-fall is to be minimised and colours muted;
 - (f) retaining existing shade structure;
 - (g) a range of seating within the playground in both sun and shade, including bench seats with backs and arm-rests;
 - (h) new bin and bubbler with dog bowl;
 - (i) improved lighting; and
 - (j) new park signage.
14. In response to community feedback, the following will be incorporated/investigated in detailed design as noted on Attachment C:
 - (a) provide additional play equipment where possible, minimise rubber soft-fall and maximise play experiences;
 - (b) provide additional low playground fencing to fully enclose the play area,
 - (c) review the layout and material of the Pring Street corner bleacher to address concerns about people congregating there;
 - (d) relocate the two seats adjacent to the tennis courts to the BBQ area. Review the provision of picnic table; and

- (e) a lighting design will be prepared as part of the detailed design and will reflect City of Sydney Lights Code requirements for park lighting.
15. An Indigenous Cultural Consultant has been engaged as part of this upgrade process to undertake Indigenous community engagement and institution/organisational consultation. In addition, the consultant has produced a 'Narratives' report, which broadly identifies project opportunities for the integration of Indigenous themes and narratives.
- (a) The key themes and narratives for Woolloomooloo Playground include:
 - (i) celebrating the theme 'Grass tree Mob';
 - (ii) provide a place where people can sit together / bring people together; and
 - (iii) engage and educate the next generation.
16. As part of the next stage of the upgrade, the consultant will review how the key themes and narratives should be implemented into the project design and delivery.
17. The following tree management and planting is proposed as part of the park works:
- (a) retain and protect all existing trees;
 - (b) improve the existing surface treatment around the *Populus deltoides* within the play area to manage tree health and minimise trip hazards;
 - (c) provide additional planting and new trees within the play area and provide supplementary planting as required; and
 - (d) preparation of an Aboricultural Impact Assessment and Tree Protection Plan to inform the detailed design and ensure appropriate construction methodology when installing equipment and soft-fall.
18. A Review of Environmental Factors (REF), and any other required approvals, will be lodged for the park upgrade in accordance with the Environmental Planning and Assessment Act 1979 and the State Environmental Planning Policy Infrastructure 2007.

Key Implications

Strategic Alignment - Sustainable Sydney 2030

19. Sustainable Sydney 2030 is a vision for the sustainable development of the City to 2030 and beyond. It includes 10 strategic directions to guide the future of the City, as well as 10 targets against which to measure progress. This report is aligned with the following strategic directions and objectives:
- (a) Direction 6 - Vibrant Local Communities and Economies - this project will provide an improved open space infrastructure which meets the needs of a wide variety of user groups and provides opportunities for social interaction.
 - (b) Direction 9 - Sustainable Development, Renewal and Design - this project is part of wider program of ongoing renewal of small parks across the LGA; it will provide improved quality of open space infrastructure.

Organisational Impact

20. This upgrade will provide improved amenity for the community visiting the park. The rectification of the wall and installation of handrails and balustrades on the stairs represent a removal / mitigation of risk to the City. The assets will require ongoing maintenance.

Risks

21. There is an ongoing risk of anti-social behaviour within the park. This includes potential vandalism of any works undertaken, drug-use related paraphernalia and general anti-social behaviour. Crime Prevention through Environmental Design principles will be applied during the detailed design including ensuring passive surveillance is achieved and appropriate lighting levels are provided.
22. Risks of not implementing the scope of these works include potential failure of play infrastructure and risk to the community. Daily inspections are carried out by the City as per standard parks and playground maintenance operations.
23. Risks of not implementing this scope of works could result in failure to meet community expectations.

Social / Cultural / Community

24. The site is an important open space within the Woolloomooloo area and has the only playground within a 400 metre radius. It is located 75 metres away from the Juanita Nielsen Community Centre and is adjacent to Plunkett Street School. Improving the amenity and play offering within the park represents an investment in this community, providing opportunities for people of different ages and abilities to use the park alongside each other.
25. An Indigenous Cultural Consultant has been engaged as part of this upgrade process, to ensure that the project works towards recognising the City's Indigenous heritage, celebrating Aboriginal and Torres Strait Islander cultures in the public domain, and enriching local knowledge about the cultural landscape.

Environmental

26. Protection and enhancement of the existing planting through this works is in line with the Urban Ecology Strategic Action Plan.

Financial Implications

27. There are sufficient funds in the current year capital budget and future year forward estimates to deliver the project. Current cost estimates and financial implications are detailed in Confidential Attachment D.

Relevant Legislation

28. Local Government Act 1993 - Section 10A provides that a Council may close to the public so much of its meeting as comprises information that would, if disclosed, confer a commercial advantage on a person with whom the Council is conducting (or proposes to conduct) business.
29. Attachment D to the subject report contains confidential commercial information which if disclosed, would confer a commercial advantage on a person with whom Council is conducting (or proposes to conduct) business.
30. Discussion of the matter in an open meeting would, on balance, be contrary to the public interest because it would compromise Council's ability to negotiate fairly and commercially to achieve the best outcome for its ratepayers.
31. Environmental Planning and Assessment Act 1979.
32. State Environmental Planning Policy Infrastructure 2007.
33. Sydney Local Environmental Plan 2012.
34. Disability Discrimination Act 1992.
35. Companion Animals Act 1998.

Critical Dates / Time Frames

36. Current Program Dates:
 - (a) Council Approval of Concept Design October 2020
 - (b) Detailed Design October 2020
 - (c) Tender July 2021
 - (d) Construction Start November 2021
 - (e) Construction Duration 20 weeks

Options

37. Proceed with progression of improvement works as outlined in this subject report including relevant approvals, preparation of construction documentation, tender and construction.
38. Project does not proceed - this option is not recommended as the current condition of the playground has a number of associated risks and compliance issues.

Public Consultation

39. Public consultation was undertaken as a two-part process: pre-consultation/early engagement and public consultation/exhibition. For a detailed description of the consultation process and findings refer to Attachment C.
40. A pre-consultation notification letter/email was issued to a number of local stakeholders and 599 local residents to notify them of the project, provide a link to a pre-consultation survey and offer to meet on site to discuss the proposed upgrade.
41. A pre-consultation workshop with 15 children from Plunkett Street Primary School as well as a meeting with the Woolloomooloo Community Gardens Group was held to provide feedback for the draft concept design.
42. There were nine submissions during the pre-consultation period.
43. The public consultation/exhibition involved the following:
 - (a) A letter sent to 599 local residents about the concept design and inviting them to provide feedback.
 - (b) A stakeholder email sent to local stakeholders, inviting them to give feedback on the proposal. The email was sent to:
 - (i) Youth and Family Connect;
 - (ii) Juanita Neislon Community Centre;
 - (iii) Plunkett Street Public School; and
 - (iv) Woolloomooloo Community Garden.
 - (c) A webpage on SydneyYourSay showing the plans for the consultation from 20 July to 24 August 2020. One hundred and sixty-eight individual users viewed the page.
 - (d) Two Have Your Say A2 panels were installed in the park notifying the park users of the proposed works, providing contact details of the Design Manager and a web address to the SydneyYourSay page.
 - (e) An online briefing was scheduled for 4 August. Two people registered but did not attend. An additional meeting was scheduled for 25 August and three residents attended.
44. There were 13 submission received during the consultation feedback. This included submissions via email and the online feedback form.
45. The proposed works were well supported by the community and the responses highlighted that the playground and its play offering is well used and well loved.
46. There were two main areas of comments including: broader comments on the park amenity and its layout, and specific requests around play equipment. These have been addressed specifically in the Engagement Feedback Table (refer to Attachment C).

47. Key feedback included:
- (a) support for upgrading the playground with nine of the submissions requesting specific play equipment/elements;
 - (b) one submission requested that the play area remain fully fenced;
 - (c) sixty per cent of respondents supported the fitness equipment; and
 - (d) two submissions raised concern about anti-social behaviour in the park with the placement of seating, picnic facilities and the proposed new Pring Street entry.
48. In response to community feedback, the following will be incorporated/investigated in detailed design as noted in Attachment C:
- (a) provide additional play equipment where possible, minimise rubber soft-fall and maximise play experiences;
 - (b) provide additional low playground fencing to fully enclose the play area;
 - (c) review the layout and material of the Pring Street corner bleacher to address concerns about people congregating there;
 - (d) relocate the two seats adjacent to the tennis courts to the barbecue area. Review the provision of picnic table; and
 - (e) a lighting design will be prepared as part of the detailed design and will reflect City of Sydney Lights Code requirements for park lighting.
49. Indigenous community engagement and institution/organisational consultation was led by the Indigenous Cultural Consultant engaged as part of this upgrade process.
50. As part of the next stage of the upgrade, the Indigenous Cultural Consultant will work with the project team to identify how the key themes and narratives identified from the consultation should be implemented into the project design and delivery.

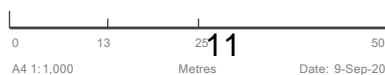
AMIT CHANAN

Director City Projects and Property

Lucy Farley, Design Manager

Attachment A

Location Plan and Site Photos



View of playground from the corner of Pring Street and Dowling Street



View towards playground of walkway and turf area



Existing play area including see-saw, balancing beam and play structures with climbing elements and slides



View of existing play area between Pring Street and tennis court

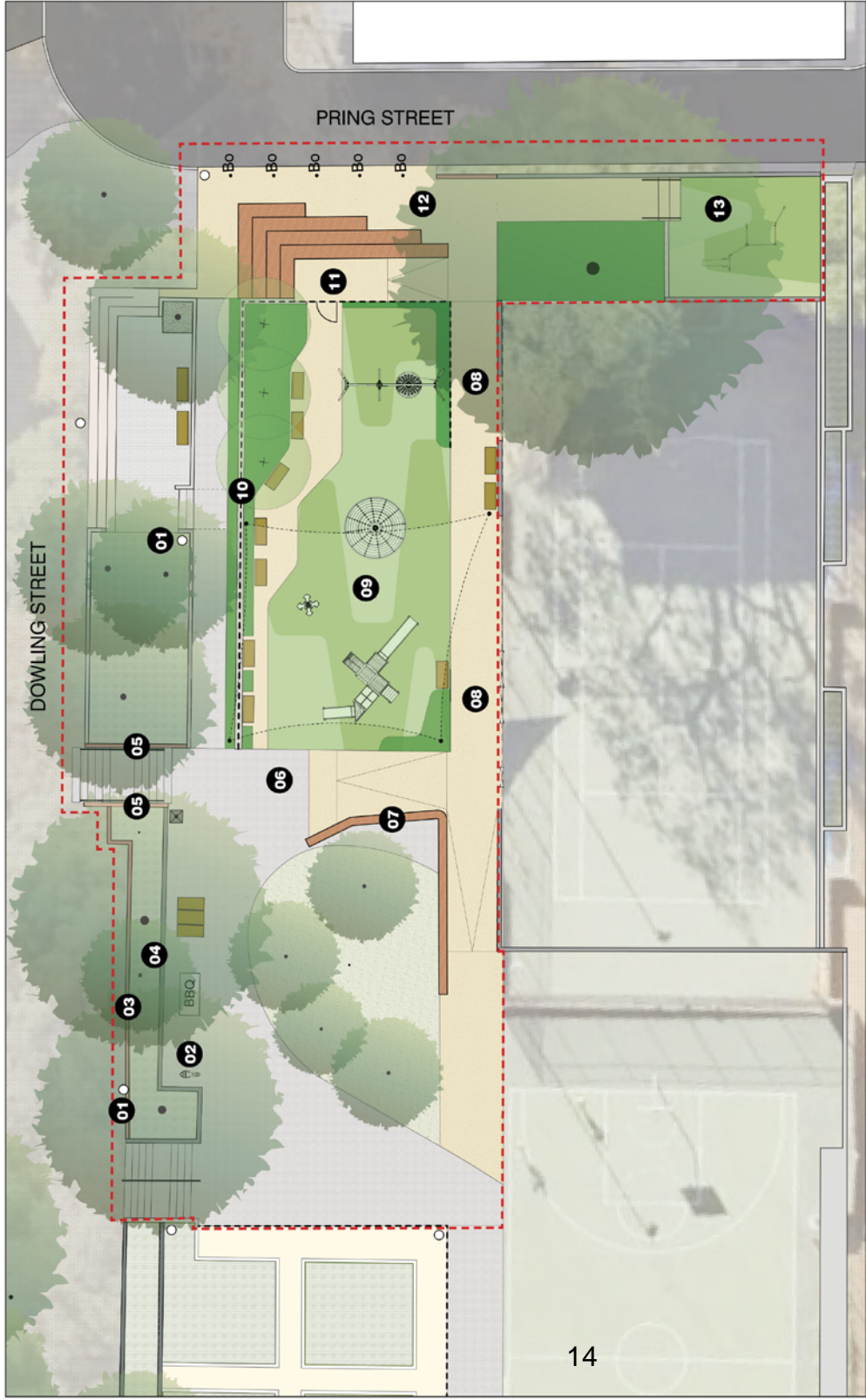


Attachment B

Revised Concept Plan

Woolloomooloo Playground

Proposed works



- Retain existing unit paving
- Retain existing concrete paths
- New concrete paths
- New brick seating walls
- New rubber softfall
- New picnic table
- New bench seating
- New playground fence
- Retain existing BBQ
- Retain existing bin
- Retain existing drinking fountain
- New bollards
- Retain existing shade sail
- New multi-user seesaw
- New carousel
- New basket & cradle seat swing
- New play structure with play panels and slides
- New exercise equipment
- Retain existing turf
- New planting
- Retain existing planting
- Retain and protect existing trees
- New trees

- 01** Lighting upgrade as required
- 02** New water bubbler
- 03** Repair existing wall to stabilise planting bed
- 04** Remove fence and repair retaining wall
- 05** Reduce wall height and provide new handrails to stairs
- 06** Improve integration between BBQ area and playground
- 07** New brick seating wall

- 08** New access path
- 09** New consolidated playground with rubber softfall, seating and planting, suitable for children aged 1 to 10 years
- 10** Repair existing retaining wall and provide new playground fence
- 11** New playground entry from Pring Street
- 12** New streetscape footpath
- 13** New exercise equipment and softfall

In response to community feedback, the following will be incorporated/investigated in detailed design;

- (a) review the layout and material of the Pring Street corner bleacher to address concerns about people congregating there;
- (b) relocate the two seats adjacent to the tennis courts to the bbq area. Review provision of picnic table;
- (c) provide additional low playground fencing to fully enclose the play area,
- (d) provide additional play equipment where possible to minimise rubber soft-fall and maximise play experiences, and;
- (e) a lighting design will be prepared as part of the detailed design and will reflect City of Sydney Lights Code requirements for park lighting

Attachment C

Engagement Report



Engagement report

Woolloomooloo Playground, Woolloomooloo

October 2020



Contents

Background	3
Engagement summary	4
Key findings	5
Engagement activities	10
Appendix	11

Background

Over the next 10 years, we're upgrading more than 60 parks across the City of Sydney area, from small pocket parks to larger local parks.

Quality green open spaces are a high priority for our residents, workers and visitors. This network of park upgrades will create better quality open spaces for everyone to enjoy, help keep our city cooler, and support biodiversity in our local areas.

Prior to finalising the designs, we are consulting the community and stakeholders on these proposed park improvements. In 2020, we consulted on our stage 15 parks, which include:

- Minogue Crescent, Forest Lodge
- Peace Park, Chippendale
- Tote Park, Zetland
- **Woolloomooloo Playground, Woolloomooloo**
- Park on Lyons Road, Camperdown

Engagement summary

From 20 July to 24 August 2020, we asked the community for feedback on a concept plan to improve Woolloomooloo playground in Woolloomooloo.

Consultation on the plan provided an opportunity for stakeholders and the community to review and comment on the design.

Consultation activities included online engagement, a letter to residents and project signage at the park.

This report outlines the community engagement activities that took place to support the consultation and summarises the key findings from the consultation.

Purpose of the engagement

The purpose of the engagement was to:

- gather feedback from stakeholders and the community about the proposed upgrade
 - determine the level of satisfaction with the revised concept design.
-

Outcomes from the engagement

Submissions received during consultation

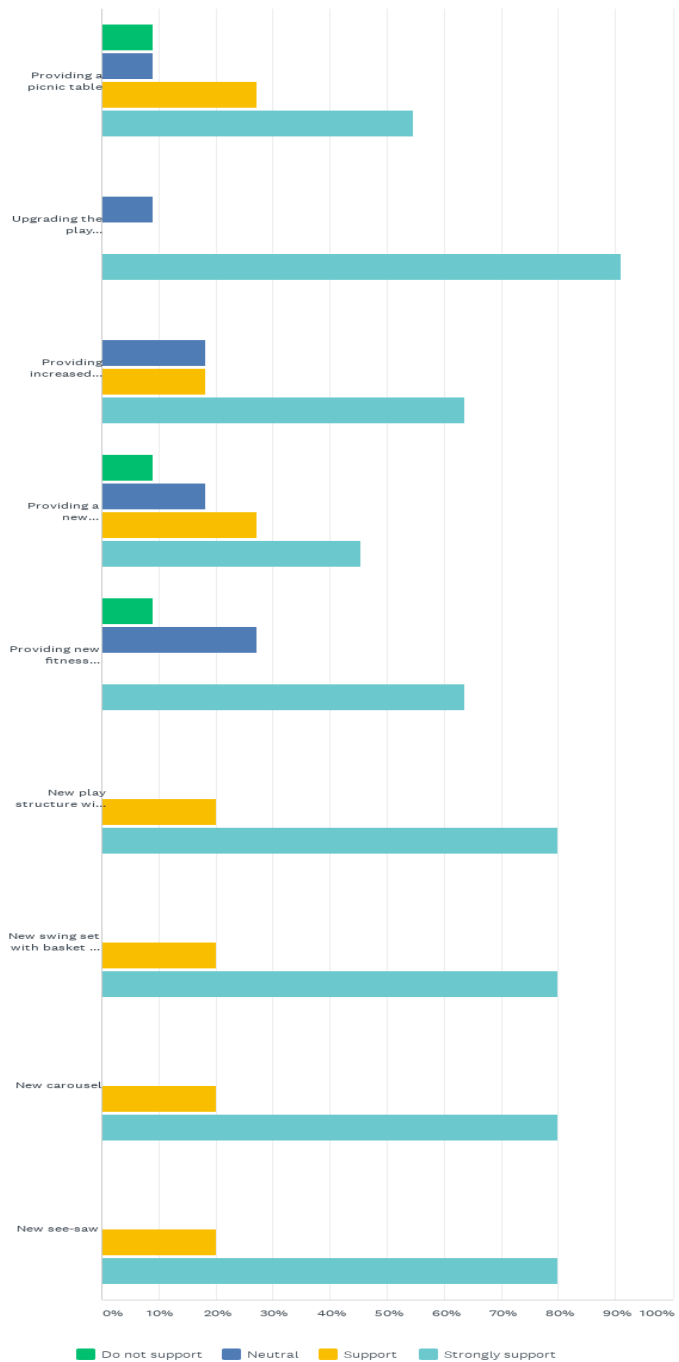
We received a total of 13 submissions (via Survey Monkey, email and phone) during the public exhibition period. The Sydney Your Say page was visited 168 times during the consultation period.

Key findings

Online feedback form - rating elements of the proposed upgrade

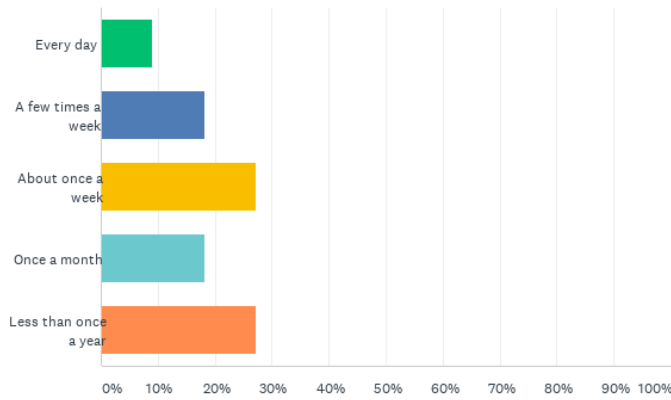
Respondents who completed the online feedback form were asked to rate how important elements of the proposed design were to them. The results are below

Q1 Do you support the following elements of the upgrade?

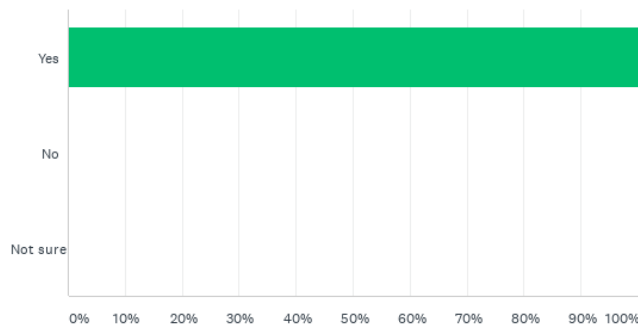


Engagement report

Q2 How often do you currently use the park?



Q3 Do you think that the upgrade would change your use of the park?



Subjects/topics raised in submissions

Several subjects/topics were raised in the feedback received. These were presented as concerns, suggestions and/or requests and are summarised below.

Layout	Total	City of Sydney Response
Support for exercise area and specific equipment requests: pull up bars, dip bars and steps bar	2	The proposed exercise equipment is currently being reviewed to incorporate suggested or similar provisions.
Oppose introduction of exercise equipment	2	The selected equipment will consider intergenerational play opportunities such as balancing beams, monkey bars etc in the selection of the equipment. Exercise provision is currently being reviewed.

Engagement report

Opposes Pring Street seating walls due to concerns about people congregating there after hours.	1	We aim to improve access to the playground with a secondary access point from Pring Street. We will review the layout and material to manage safety/antisocial behaviour concerns in the next phase of design.
Support for increased access	1	Noted.
Request for additional picnic table and seating	2	Not currently being investigated for this site. We will remove the picnic setting provision for the park due to the close proximity to residents and concerns of anti-social behaviour. We will review providing seating and platform benches.
Oppose additional facilitates; benches and picnic tables due to concerns about people congregating after hours.	1	We will remove the proposed picnic setting provision and review the placement/location of seating and platform benches to ensure a safe environment for playground users and concerns of anti-social behaviour.
Requests retention of fully fenced play environment.	1	We will provide additional low playground fencing to fully enclose the play area. The playground has been designed to integrate with the adjacent areas and to improve access and connectivity.
Support for low playground fence	1	Noted.
Support for retaining shade sail	1	Included in the proposed upgrade.
Requests to minimise rubber soft-fall in the playground and support for natural soft-fall; sand, bark, turf.	1	Natural materials and minimal softfall is preferred. Rubber softfall will be minimised however surfaces such as sand or bark mulch are not being investigated for this site.
Requests soft-fall colour different under swing	1	The playground design and placement of equipment will adhere to fall zone requirements and standards. We will review the orientation and circulation space around the equipment in design development.
Play space	Total	City of Sydney Response
Request for natural (not just plastic) play equipment.	2	We propose to use robust and durable materials in colours and textures which reflect the local neighbourhood character.

Engagement report

Request for nature play elements (climbing logs and steppers)	2	The selection and layout of equipment is currently being reviewed. We will provide additional play equipment where possible and maximise play experiences.
Request for sandpit and water play equipment	2	Not being investigated for this site due to the ongoing maintenance requirements. Water play is generally proposed where a high level of maintenance can be achieved at 'destination' parks.
Request for a grass maze	1	Not currently being investigated for this site.
Support for equipment to cater for all ages and abilities	1	Included in the proposed upgrade.
Supports play equipment that is exciting, challenging and suitable for older children (10+ years)	3	Included in the proposed upgrade.
Requests play structure to have step access (not ladder) for younger children	1	Included in the proposed upgrade.
Support for new swing	2	Included in the proposed upgrade. The selection and layout of equipment is currently being reviewed. We will provide additional play equipment where possible and maximise play experiences.
Request for a trampoline	3	Selection and layout of equipment is currently being reviewed. Noting that due to the size restraints and the required fall-zones this will result in a refinement in play equipment across the playground. We will provide additional play equipment where possible and maximise play experiences.
Supports rope climbing structure	2	Included in the proposed upgrade.
Requests for a feature play structure (Tee-pee, cubby house, tree house, rocket ship)	2	Play structure with imaginative play opportunities to be included in the proposed upgrade. A themed structure is not being investigated. We will review the proposed playground equipment to maximise play experiences and minimise rubber soft-fall.
Request for a slide	2	Included in the proposed upgrade.
Request for a flying fox	1	Not currently being investigated for this site.

Engagement report

Request for obstacle course (balancing logs, steppers, climbing nets)	1	The selection and layout of equipment is currently being reviewed. We aim to provide additional play equipment where possible and maximise play experiences.
Planting	Total	City of Sydney Response
Request for edible/bush tucker plants and planting that attracts birds	1	Design team to investigate opportunity to incorporate in next phase of design.
Supports more soft landscaping/planting in the play space	2	Included in the proposed upgrade.
Outside scope	Total	City of Sydney Response
Shade sail over tennis court area	1	Outside of scope of this project. Request has been referred to the Parks Team.
Keep and upgrade the tennis court, repair the tennis net and net height adjuster arm	2	Outside of scope of this project. Request has been referred to the Parks Team.
Requests for artwork (interactive/climbable and inspirational) in the playground	2	Artwork/sculpture is outside of scope of this project. We are reviewing the proposed play equipment proposed to maximise play experiences. Imaginative play opportunities to be included in the play offering.

Engagement activities

Overview of engagement

A Sydney Your Say webpage was created, along with an online survey. 599 letters were sent to residents in the area and key stakeholders were contacted.

A Zoom briefing was scheduled for 25 August and 3 residents attended.

Before consultation began, the project team run a work shop with 15 children from Plunkett Street Primary school as well as a meeting with the community gardens group to provide feedback on the early design.

1. Sydney Your Say webpage

A Sydney Your Say webpage, <https://www.cityofsydney.nsw.gov.au/council/your-say/park-playground-upgrades/improving-woolloomooloo-playground-woolloomooloo> was created. The page included an electronic copy of the revised concept design, survey and other key information about the consultation.

2. Online feedback form via Survey Monkey

The community and stakeholders were able to give feedback using an online feedback form. A link to the feedback form was provided on the Sydney Your Say website.

3. Sydney Your Say e-News

The consultation was included in the Sydney Your Say 11 August 2020 e-Newsletter (7,384 subscribers).

4. Consultation letter

A letter was posted to residents, inviting them to give feedback on the proposal. 599 letters were distributed.

5. Notification email

An email was sent to key stakeholders, including the Youth and Family Connect, Plunkett Street public school, Juanita Nielson community centre, Woolloomooloo Community garden group and residents who had taken part in the initial, pre-consultation survey.

6. On site signage

Two notice boards were installed at Woolloomooloo playground, inviting people to give feedback on the proposal.

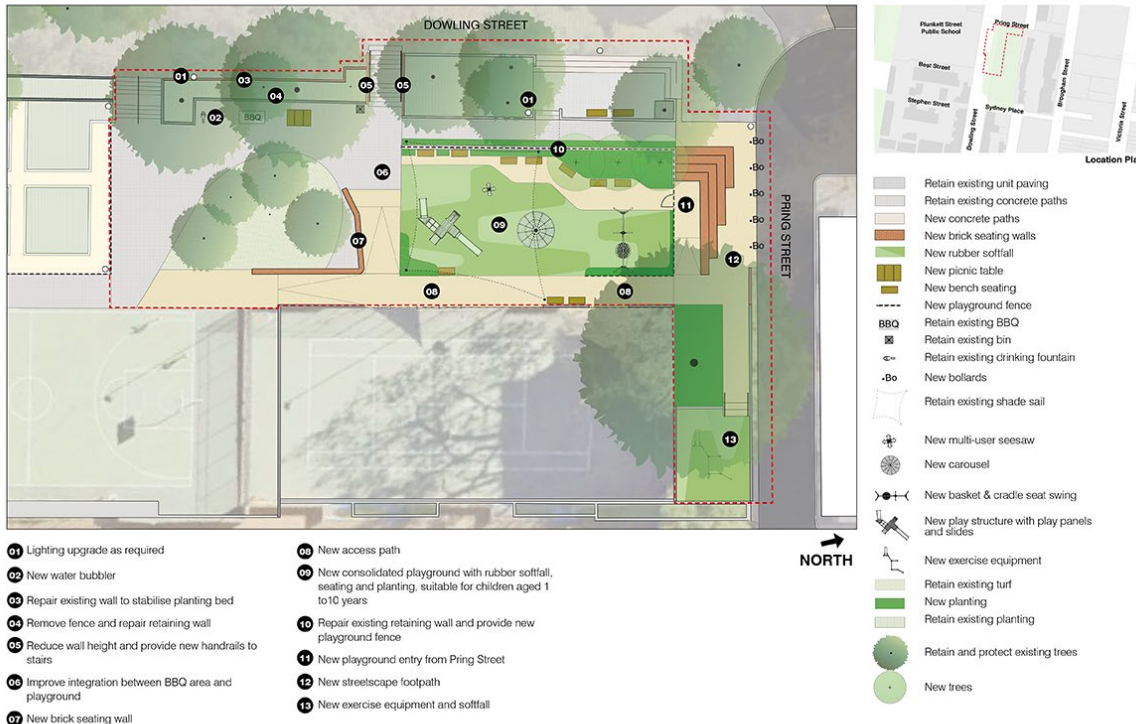
7. Community meeting

A Zoom meeting was scheduled for the 4 August and no residents attended. An additional Zoom meeting was scheduled for 25 August and 3 residents attended.

Appendix

Appendix A: concept design

Proposed works



- 01 Lighting upgrade as required
- 02 New water bubbler
- 03 Repair existing wall to stabilise planting bed
- 04 Remove fence and repair retaining wall
- 05 Reduce wall height and provide new handrails to stairs
- 06 Improve integration between BBQ area and playground
- 07 New brick seating wall
- 08 New access path
- 09 New consolidated playground with rubber softfall, seating and planting, suitable for children aged 1 to 10 years
- 10 Repair existing retaining wall and provide new playground fence
- 11 New playground entry from Pring Street
- 12 New streetscape footpath
- 13 New exercise equipment and softfall

NORTH

Woolloomooloo Playground upgrade - community consultation plan



Improving Woolloomooloo Playground, Woolloomooloo



Under review

Contributions to this consultation are closed for evaluation and review. The project team will report back on key outcomes.

We plan to upgrade Woolloomooloo Playground, Woolloomooloo and invite your feedback on the proposed design.

Over the next 10 years, we will upgrade more than 60 parks across the City of Sydney area, from small pocket parks to larger local parks.

Quality green open spaces are a priority for our residents, workers and visitors. These park upgrades will create better quality open spaces for everyone to enjoy, help keep our city cooler, and support biodiversity in our local areas.

The proposal for Woolloomooloo Playground includes:

- new stair free access path into the park from Pring Street
- new rubber soft-fall play area with a play structure with play panels and slides, a swing set with basket and cradle seats, a see-saw and a carousel
- improved integration between playground and barbecue area
- new exercise equipment
- new access path
- new plants and trees
- lighting upgrade as required.

How you can give feedback

You can [view the proposed design](#) and give your feedback by completing an online feedback form.

[Online form](#)

Consultation closes at **5pm on Monday 24 August 2020**.

We also invite you to a briefing on the proposed design with the project team via a Zoom video call on **Tuesday 4 August** from **6pm to 6.30pm**. [Register to join this meeting](#) by 5pm on Sunday 2 August. After you register, we will provide you with more information to set up the video call.

Feedback may be published in publicly available reports at the end of the consultation period. Your name or organisation's name may appear in these reports with your feedback attributed. If you would like your feedback to be kept confidential, please let us know when making your submission.

Other ways to give your feedback

We want to make sure everybody has the opportunity to provide ideas and feedback.

Key dates

Public consultation period
20 July to 24 August 2020

Online briefing
4 August 2020

Contacts

Lucy Farley
Design Manager

02 9265 9333
sydneyyoursay@cityofsydney.nsw.gov.au

Related projects

- [Park and playground upgrades](#)

Links

[Online form](#)

[Online briefing registration](#)



[Park upgrade plans](#)

Do you live, visit or work in Woolloomooloo, Zetland, Chippendale, Forest Lodge or Camperdown? We're upgrading parks and playgrounds in your local area. Let us know what you think of the proposed designs:

- [Peace Park, Chippendale](#)
- [Tote Park playground, Zetland](#)
- [Minogue Crescent Reserve, Forest Lodge](#)
- [Woolloomooloo Playground, Woolloomooloo](#)
- [Park on Lyons Road, Camperdown](#)

[Read more](#)

Engagement report

Appendix C: Consultation letter



THE LORD MAYOR OF SYDNEY
CLOVER MOORE

20 July 2020

Improving Woolloomooloo Playground, Woolloomooloo

The City of Sydney plans to upgrade Woolloomooloo Playground, Woolloomooloo and invite your feedback on the proposed design.

Over the next 10 years, we will upgrade more than 60 parks across the City of Sydney area, from small pocket parks to larger local parks. These park upgrades will create better-quality open spaces for everyone to enjoy, help keep our city cooler, and support biodiversity in our local areas.

The proposal for Woolloomooloo Playground includes:

- new stair-free access path into the park from Pring Street
- new rubber soft-fall play area with a play structure with play panels and slides, a swing set with basket and cradle seats, a see-saw and a carousel
- improved integration between playground and BBQ area
- new exercise equipment
- new access path
- new planting and trees
- lighting upgrade as required.

How to give feedback on the design

We know our residents, workers and visitors are focused on physical distancing and health and wellbeing, and many are experiencing economic stress. Visit cityofsydney/covid19-response for more information on how the City is responding to the Covid-19 pandemic.

While how our staff will consult with you may look a little different, we still want to hear from you and will provide plenty of opportunities to have your say on the projects and programs that affect you.

The proposed design is included with this letter. You can give feedback on this proposal at cityofsydney.nsw.gov.au/park-playground-upgrades by **5pm on 17 August 2020**.

We also invite you to a briefing on the proposed design with the project team via a Zoom video call on **Tuesday 4 August** from **6pm to 6.30pm**. Register to join this meeting at the link above by 5pm on Sunday 2 August. After you register, we will provide you with more information to set up the video call.

Next steps

We will report all feedback and any resulting design changes to Council. After Council resolves to proceed with the upgrade, we will continue to detailed design. We will keep you updated on the progress of this project.

Sydney Town Hall
483 George Street Sydney NSW 2000
Phone 02 9265 9229 Fax 02 9265 9328
cmoore@cityofsydney.nsw.gov.au

Sustainable
Sydney 2030

The time for action on
climate change is now

O OLM2020 004178 WOOLLOOMOOLOO PLAYGROUND

2

For more information about the project, please contact Lucy Farley, City Design Manager, on 9265 9333 or at sydneyyoursay@cityofsydney.nsw.gov.au.

Yours sincerely

Clover Moore
Lord Mayor of Sydney

CITY OF SYDNEY 

Have your say

Improving Woolloomooloo playground

We plan to upgrade Woolloomooloo playground and invite your feedback on the proposed design.

Over the next 10 years, we're upgrading more than 60 parks across the City of Sydney, from small pocket parks to larger local parks.

Quality green open spaces are a high priority for our residents, workers and visitors. This network of park upgrades will create better quality open spaces for everyone to enjoy, help keep our city cooler, and support biodiversity in our local areas.

You can view the proposed design and give feedback at cityofsydney.nsw.gov.au/park-playground-upgrades

Consultation closes at **5pm on Tuesday 11 August 2020.**

We also invite you to a briefing on the proposed design with the project team via a Zoom video call on **Tuesday 4 August from 6pm to 6.30pm**. Register to join this meeting at cityofsydney.nsw.gov.au/park-playground-upgrades by **5pm on Sunday 2 August**. We will provide you with more information to set up the video call.

For more information about the project, please contact Lucy Farley, Design Manager on **02 9265 9333** or email sydneyyoursay@cityofsydney.nsw.gov.au

Document is Restricted

Item 3.

Project Scope - Minogue Crescent Reserve Upgrade, Forest Lodge

File No: X025396

Summary

This report outlines the proposed scope of works for the whole park upgrade at Minogue Crescent Reserve, Forest Lodge. Minogue Crescent Reserve has been identified as part of the Stage 15 small parks and playgrounds improvement program.

There are three landowners which make up the site: Sydney Water, Land and Housing Corporation and the City of Sydney.

The project brief is to refurbish the play area including: replace end of life equipment and soft-fall as required, provide a range of play experiences, improve access into and through the park, improve the function of the existing turf areas, and provide additional seating and associated landscape improvements.

Draft concept plans were presented to the community between 20 July 2020 and 24 August 2020, and exhibited on the City's website. The proposed works were generally supported by the community and the responses highlighted that an upgrade to this park would increase the current use of this park.

The principles of the proposal are to protect and enhance the existing landscape character and habitat planting, provide a local scale play space which improves the play opportunities for children aged 0-10, provide a useable turf area, provide a range of seating opportunities which encourage social interaction and use simple, robust, high quality materials which reflect the local neighbourhood character.

Recommendation

It is resolved that:

- (A) Council endorse the scope of work improvements to the park and playground at Minogue Crescent Reserve, Forest Lodge, as described in the subject report and shown in the Revised Concept Plan as Attachment B to the subject report, for progression to relevant approvals, preparation of construction documentation, noting tender and construction pending favourable resolution of a signed agreement with the Land and Housing Corporation;
- (B) authority be delegated to the Chief Executive Officer to liaise with the Land and Housing Corporation and Sydney Water to reach agreement on the use of land before any works commence; and
- (C) Council note the estimated project forecast as outlined in Confidential Attachment D to the subject report.

Attachments

- Attachment A.** Location Plan and Site Photos
- Attachment B.** Concept Plan
- Attachment C.** Engagement Report
- Attachment D.** Financial Implications (Confidential)

Background

1. The City has an ongoing small parks and playgrounds improvement program. This program is for parks which need upgrade or enhancement works, the replacement of end-of-life equipment, and to generally provide appropriate facilities for local residents.
2. Minogue Crescent Reserve is a triangular piece of land which is bound to the west by Minogue Crescent, to the north by the Johnston's Creek Sewage Aqueduct (State Heritage Listed) and to the south by public housing. It is zoned RE1 - Public Recreation. The site is approximately 1,900 square metres.
3. There are three landowners which make up the site: Sydney Water, Land and Housing Corporation and the City of Sydney. Refer to Attachment A.
4. The area that includes Minogue Crescent Reserve is within the traditional homelands of the Gadigal and Wangal people, two of the 29 clan groups of the Sydney metropolitan area that are collectively referred to as the Eora Nation.
5. An Indigenous Cultural Consultant has been engaged as part of this upgrade process, to ensure the project contributes to recognising the City's Indigenous heritage, celebrating Aboriginal and Torres Strait Islander cultures in the public domain, and enriching local knowledge about the cultural landscape.
6. Minogue Crescent Reserve was established in the late 1980's as part of the adjacent public housing development. Immediately prior to this the site had been part of the construction company AW Edwards offices/sheds.
7. The existing site is predominantly a sloped turf area. There are a random range of trees of different ages and species. The play area consists of a large sloping rubber pad with a double swing and a small play structure. There are two non-compliant seats, no path access from the road and a single flood light.
8. Minogue Crescent Reserve was identified for an upgrade due to the overall condition of the reserve including the condition of the existing playground, the limited access into and through the park and limited seating. Currently there are two key user groups: residents at the adjacent public housing units and individuals or groups associated with the Police and Citizens Youth Club.
9. Consideration has been given to the provision of play equipment in surrounding parks within a 500-metre radius, to ensure a coordinated network of facilities that caters for a broad range of park users.
10. The site is nominated as a Priority Habitat site under the Urban Ecology Strategy. There is currently a series of garden beds on the southern edge of the reserve which are bush restoration sites managed by the City.

Draft Concept Plan

11. A concept plan was developed for the works and community consultation was undertaken (refer to Attachment B).

The concept plan sets the overall layout. The key principles are:

- (a) protect and enhance the existing landscape character and habitat provision;
 - (b) provide a local scale play space which improves the play opportunities for local children;
 - (c) provide a range of seating opportunities which encourage social interaction; and
 - (d) use simple, robust, high quality materials which reflect the local neighbourhood character.
12. The proposal includes the following works:
- (a) a new on-grade path connecting from the street, through the park and towards the Police and Citizens Youth Club;
 - (b) an open lawn area for passive recreation and informal ball games;
 - (c) a range of seating in both sun and shade, including a low seating wall and new bench seats with backs and arm-rests;
 - (d) a new basket swing;
 - (e) a new hill slide and nature play area;
 - (f) new tree planting;
 - (g) new planted swale to manage site stormwater;
 - (h) extension of the existing habitat planting;
 - (i) improved access to the adjacent public housing units; and
 - (j) footpath widening on Minogue Crescent.
13. An Indigenous Cultural Consultant has been engaged as part of this upgrade process to undertake Indigenous community engagement and institution/organisational consultation. In addition, the consultant has produced a 'Narratives' report, which broadly identifies project opportunities for the integration of Indigenous themes and narratives.
14. The themes and narratives for Minogue Crescent Reserve which were raised include:
- (a) natural features of the place and its broader connections to the Johnston's Creek through drainage lines and pathways; and
 - (b) association of freshwater with women and women's business, birthing and medicines, fishing and coming together.

15. The engagement process highlighted that stakeholders were interested in seeing the demonstration of culture in the design of the parks. This was predominantly expressed through a desire to see Aboriginal themed inclusions in the design such as artwork, language and native plants.
16. As part of the next stage of the upgrade, the consultant will review how the key themes and narratives should be implemented into the project design and delivery.
17. In response to the public consultation, the following will be investigated and incorporated where possible in the detailed design as noted on Attachment B:
 - (a) provision of a traditional swing in addition to the proposed nest swing;
 - (b) a bin and bubbler with dog bowl will be provided;
 - (c) a lighting design will be prepared as part of the detailed design and will reflect the City of Sydney Lights Code requirements for park lighting; and
 - (d) shade modelling will be undertaken for the site, with the final equipment and seating location to reflect this analysis.
18. The following tree management and planting is proposed as part of the park works:
 - (a) retain and protect all existing trees and planting within the existing bush restoration area;
 - (b) relocation of five small *Liriodendron tulipifera* trees to accommodate the works;
 - (c) eleven additional trees to be planted across the site; and
 - (d) preparation of an Aborigicultural Impact Assessment and Tree Protection Plan to inform the detailed design and ensure appropriate construction methodology.
19. A Review of Environmental Factors (REF) will be lodged for the works in accordance with the Environmental Planning Assessment Act 1979 and the State Environmental Planning Policy Infrastructure 2007.

Key Implications

Strategic Alignment - Sustainable Sydney 2030

20. Sustainable Sydney 2030 is a vision for the sustainable development of the City to 2030 and beyond. It includes 10 strategic directions to guide the future of the City, as well as 10 targets against which to measure progress. This report is aligned with the following strategic directions and objectives:
 - (a) Direction 6 - Vibrant Local Communities and Economies - this project will provide an improved open space infrastructure which meets the needs of a wide variety of user groups and provides opportunities for social interaction.
 - (b) Direction 9 - Sustainable Development, Renewal and Design - this project is part of wider program of ongoing renewal of small parks across the local government area; it will improve the quality of open space infrastructure.

Organisational Impact

21. This upgrade will provide an improved park amenity and play experience for children, their carers and other community members visiting the park. The replacement of non-compliant assets represents a removal/mitigation of risk to the City. The assets will require ongoing maintenance.

Risks

22. Risks related to land ownership: the area of land which makes up the site has three landowners, Sydney Water (includes aqueduct), Land and Housing Corporation (LAHC) and the City of Sydney. No formal agreement / care and control management with landowners is currently in place to manage these areas. A licence is currently being pursued by the City to ensure the appropriate license agreements are in place and notification/approvals have been sought from both Sydney Water and the Land and Housing Corporation. At this stage in principle support has been provided by Sydney Water.
23. Risks related to the provision of appropriate lighting levels to paths which currently connect through the site to the adjacent Land and Housing Corporation site. Lighting installation and maintenance will be coordinated with the Land and Housing Corporation to ensure appropriate provision of lighting levels.
24. Risks related to tree maintenance currently maintained by the City includes trees located within the Sydney Water and Land and Housing Corporation sites. No formal agreement / care and control management with landowners is currently in place to manage these areas.
25. Risks of not implementing the scope of these works include potential failure of play infrastructure and risk to the community. Daily inspections are carried out by the City as per standard parks and playground maintenance operations.
26. Risks of not implementing this scope of works could result in failure to meet community expectations.

Social / Cultural / Community

27. Minogue Crescent Reserve is part of a significant network of well-loved pocket parks and larger parks located within the Glebe/Forest Lodge/Annandale area. It is co-located with the Police and Citizens Youth Club. Improving the amenity and play offering within the park represents an investment in this community, providing opportunities for people of different ages and abilities to use the park alongside each other.
28. An Indigenous Cultural Consultant has been engaged as part of this upgrade process, to ensure that the project contributes to recognising the City's Indigenous heritage, celebrating Aboriginal and Torres Strait Islander cultures in the public domain, and enriching local knowledge about the cultural landscape.

Environmental

29. Minogue Crescent Reserve is nominated as 'Priority Habitat Site'. It is part of a series of connected habitat areas which extend from the Glebe Foreshore Walk East to Orphan School Creek. Protection and enhancement of the existing planting through this works is in line with the Urban Ecology Strategic Action Plan.

Financial Implications

30. There are sufficient funds in the current year capital budget and future year forward estimates. Current cost estimates and financial implications are detailed in Confidential Attachment D.

Relevant Legislation

31. Local Government Act 1993 - Section 10A provides that a Council may close to the public so much of its meeting as comprises information that would, if disclosed, confer a commercial advantage on a person with whom the Council is conducting (or proposes to conduct) business.
32. Attachment D to the subject report contains confidential commercial information which if disclosed, would confer a commercial advantage on a person with whom Council is conducting (or proposes to conduct) business.
33. Discussion of the matter in an open meeting would, on balance, be contrary to the public interest because it would compromise Council's ability to negotiate fairly and commercially to achieve the best outcome for its rate payers.
34. Environmental Planning and Assessment Act 1979.
35. State Environmental Planning Policy Infrastructure 2007.
36. Sydney Local Environmental Plan 2012.
37. Disability Discrimination Act 1992.
38. Companion Animals Act 1998.

Critical Dates / Time Frames

39. Current Program Dates
 - (a) Council Approval of Concept Design October 2020
 - (b) Detailed Design October 2020
 - (c) Tender July 2021
 - (d) Construction Start November 2021
 - (e) Construction Duration 20 weeks

Options

40. Proceed with progression of improvement works as outlined in this subject report including relevant approvals, preparation of construction documentation, tender and construction.

41. Project does not proceed - this option is not recommended as the current condition of the playground has a number of associated risks and compliance issues.

Public Consultation

42. The Land and Housing Corporation and Sydney Water were each notified as landowners of the proposed works and to establish the required approval process for the City to undertake these works. These discussions are ongoing.
- (a) In principle support for the works has been provided by Sydney Water subject to a formal license agreement being in place and further consultation through the detailed design phase.
 - (b) The project team has received correspondence on behalf of the tenants at the Land and Housing Corporation but is yet to receive formal feedback from the Land and Housing Corporation as landowners.
43. Community consultation was undertaken as a two-part process: pre-consultation/early engagement and public consultation/exhibition. For a detailed description of the consultation process and findings refer to Attachment C.
44. A pre-consultation notification letter / email was issued to several local stakeholders and 20 residents to notify them of the project, provide a link to a pre-consultation survey and offer to meet on site to discuss the proposed upgrade.
45. A pre-consultation workshop with children attending the Police and Citizens Youth Club Holiday camp was held on 10 October 2019. There were 30 children in attendance, aged 5-12.
46. There were nine submissions during the pre-consultation period.
47. The public consultation/exhibition involved the following:
- (a) a letter sent to 156 residents about the concept design, inviting them to provide feedback;
 - (b) a stakeholder email sent to key stakeholders, inviting them to give feedback on the proposal. The email was sent to:
 - (i) The Glebe Society;
 - (ii) Friends of Orphan School Creek – Bushcare;
 - (iii) Police and Citizens Youth Club including the following groups using these facilities:
 - a. The Talent Society;
 - b. Gymbaroo;
 - c. Karate Acaemy of Japan - Gojuryu Dojo; and
 - d. Youth and Family Connect;
 - (iv) Forest Lodge Public School;
 - (v) Sydney Water (Landowner); and

- (vi) Land and Housing Corporation (Landowner);
 - (c) a webpage on SydneyYourSay showing the plans for the consultation from 20 July 2020 to 24 August 2020. Two hundred and thirty-eight individual users viewed the page;
 - (d) two Have Your Say A2 panels were installed in the park notifying the park users of the proposed works, providing contact details for the Design Manager and the web address for the SydneyYourSay page; and
 - (e) an online briefing was scheduled for 28 July 2020. One person registered but did not attend.
48. There were 11 submissions received during the consultation period. This included submissions via email and the online feedback form. There was one submission from the Land and Housing Corporation on behalf of its tenants.
49. The proposed works were generally supported by the community and the responses highlighted that an upgrade to this park would increase the current use of this park.
50. There were three main areas of comments including: broader comments on the park amenity, specific requests around the playground, and commentary around road safety on Minogue Crescent. These comments have been addressed in the Engagement Report (Attachment C).
51. Key feedback included:
- (a) Three submissions requested gym equipment to be included in the upgrade. At this stage, fitness equipment will not be provided in line with the park fitness plan for the local government area.
 - (b) Two submissions requesting fencing. Fencing will not be provided at this stage. Protection from the road will be achieved through adjustments to site levels, planting, a low seating wall and a pathway.
 - (c) Two submissions requesting accessible seating including picnic tables. A range of accessible seating opportunities will be provided as part of these works. No picnic tables are proposed due to the proximity to residential units. Picnic tables and bbq facilities are provided at Harold Park.
 - (d) Two submissions requesting lighting within the park. A lighting audit has been undertaken and a lighting design will be developed as part of the detailed design.
 - (e) Four submissions requesting consideration of shade to the playground. Equipment will be located and orientated with consideration of the existing shade and future shade of the proposed trees. This is considered a small, local park which is for short stay use. Within a short walking distance there are equivalent and larger scale facilities with high levels of shade provided.
 - (f) Two submissions requesting the traditional swings be retained. Provision of a single traditional swing and a nest swing will be considered as part of the detailed design.

- (g) Two submissions raised concerns around road safety and sightlines on Minogue Crescent. This has been noted and will be referred internally to the City's Traffic Team.
52. In response to community feedback, the following will be incorporated/investigated into a detailed design as noted on Attachment B:
- (a) provision of a traditional swing in addition to the proposed nest swing;
 - (b) a bin and bubbler with dog bowl will be provided;
 - (c) a lighting design will be prepared as part of the detailed design and will reflect City of Sydney Lights Code requirements for park lighting; and
 - (d) shade modelling will be undertaken for the site, with the final equipment and seating location to reflect this analysis.
53. Indigenous community engagement and institution/organisational consultation was led by the Indigenous Cultural Consultant engaged as part of this upgrade process.
54. As part of the next stage of the upgrade, the Indigenous Cultural Consultant will work with the project team to identify how the key themes and narratives identified from the consultation should be implemented into the project design and delivery.

AMIT CHANAN

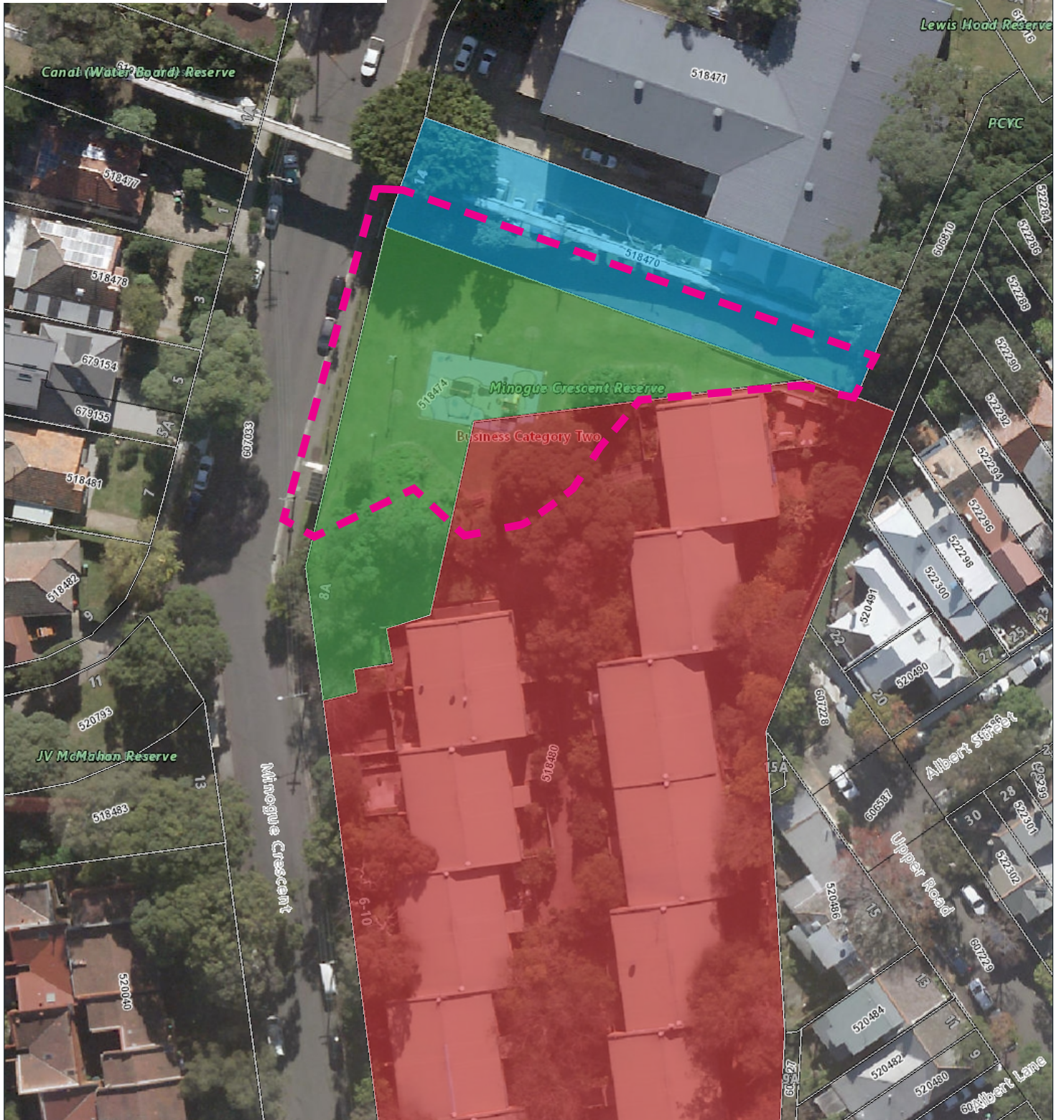
Director City Projects and Property

Helen Rogers, Design Manager

Attachment A

Location Plan and Site Photos

- Land and Housing Corporation Owned
- City of Sydney Owned
- Sydney Water Owned
- Extent of Works



© City of Sydney Council 2020. All Rights Reserved. This map has been compiled from various sources and the publisher and/or contributors accept no responsibility for any injury, loss or damage arising from the use, error or omissions therein. While all care is taken to ensure a high degree of accuracy, users are invited to notify Council's Spatial Services of any map discrepancies. No part of this map may be reproduced without written permission.

View south along Minogue Crescent frontage.



View to Johnsons Creek Aqueduct



Existing Play area including climbing frame and double swing



Existing seating and edge adjacent bush-restoration area



Attachment B

Concept Plan

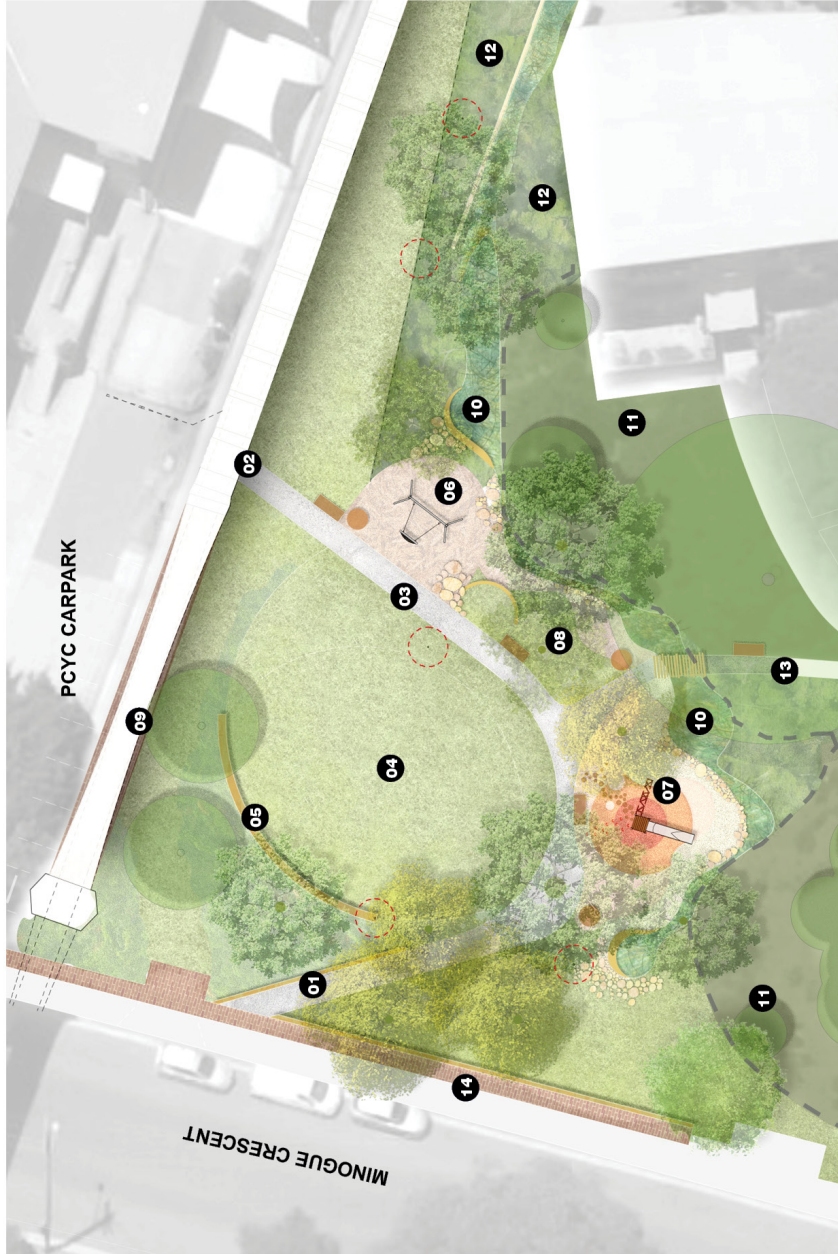
Minogue Crescent Reserve

In response to community feedback, the following will be investigated and where possible incorporated into the detailed design. These are as follows:

- Provision of a traditional swing in addition to the proposed nest swing;
- A bin and bubbler with dog bowl will be provided;
- A lighting design will be prepared as part of the detailed design and will reflect City of Sydney Lights Code requirements for park lighting, and;
- Shade modelling will be undertaken for the site, with the final equipment and seating location to reflect this analysis.

Key

- Existing trees to be retained
- New trees
- Existing trees to be relocated
- Existing habitat planting
- Turf
- New habitat planting
- New bench seats
- New round timber platform
- New concrete path
- Recycled brick paving
- New mulch surface
- New rubber soffitall



- 01 New entry from street
- 02 New connection to PCYC
- 03 New central path
- 04 Open lawn area
- 05 New low seating wall
- 06 Improved boundary to PCYC carpark
- 07 New hill slide and nature play
- 08 Shaded seating area in turf
- 09 Improved access to adjacent residences
- 10 New planting to capture site stormwater
- 11 Existing habitat planting to be retained
- 12 Improved access to adjacent residences
- 13 Footpath widening on Minogue Crescent
- 14 Footpath widening on Minogue Crescent

Attachment C

Engagement Report



Engagement report

Minogue Crescent, Forest Lodge

October 2020



Contents

Background	3
Engagement summary	4
Key findings	5
Engagement activities	11
Appendix	13

Background

Over the next 10 years, we're upgrading more than 60 parks across the City of Sydney area, from small pocket parks to larger local parks.

Quality green open spaces are a high priority for our residents, workers and visitors. This network of park upgrades will create better quality open spaces for everyone to enjoy, help keep our city cooler, and support biodiversity in our local areas.

Prior to finalising the designs, we are consulting the community and stakeholders on these proposed park improvements. In 2020, we consulted on our stage 15 parks, which include:

- **Minogue Crescent, Forest Lodge**
- Peace Park, Chippendale
- Tote Park, Zetland
- Woolloomooloo Playground, Woolloomooloo
- Park on Lyons Road, Camperdown

Engagement summary

From 20 July to 24 August 2020, we asked the community for feedback on a concept plan to improve Minogue Crescent in Forest Lodge.

Consultation on the plan provided an opportunity for stakeholders and the community to review and comment on the design.

Consultation activities included online engagement, a letter to residents and project signage at the park.

This report outlines the community engagement activities that took place to support the consultation and summarises the key findings from the consultation.

The City also hired an Indigenous consultant to specifically engage with the indigenous community and get their feedback on the proposal.

Purpose of the engagement

The purpose of the engagement was to:

- gather feedback from stakeholders and the community about the proposed upgrade
 - determine the level of satisfaction with the revised concept design.
-

Outcomes from the engagement

Submissions received during consultation

We received a total of 11 submissions (via Survey Monkey, email and phone) during the public exhibition period. The Sydney Your Say page was visited 238 times during the consultation period.

One submission was made on behalf of Land and Housing Corporation NSW.

Key findings

Early Engagement

Early engagement with residents took place in November 2019 to help inform the concept design. From the early engagement survey respondents' prioritised habitat planting over the provision of play and turf areas. It was noted that there is limited wheelchair or pedestrian access, the topography of the site limits its use for kicking a ball around and that there is a lack of shade and seating.

The engagement with children showed a preference for nature play options over traditional equipment. Children made the suggestion that there should be more shade, more challenging equipment for climbing and more swings. It was suggested some sort of cubby house could be provided. The highlight for the children when in the park was interacting with the Aqueduct; they commented that it was "good for kicking goals", "as a cubby house", "challenging to climb" and "fitted lots of children at once".

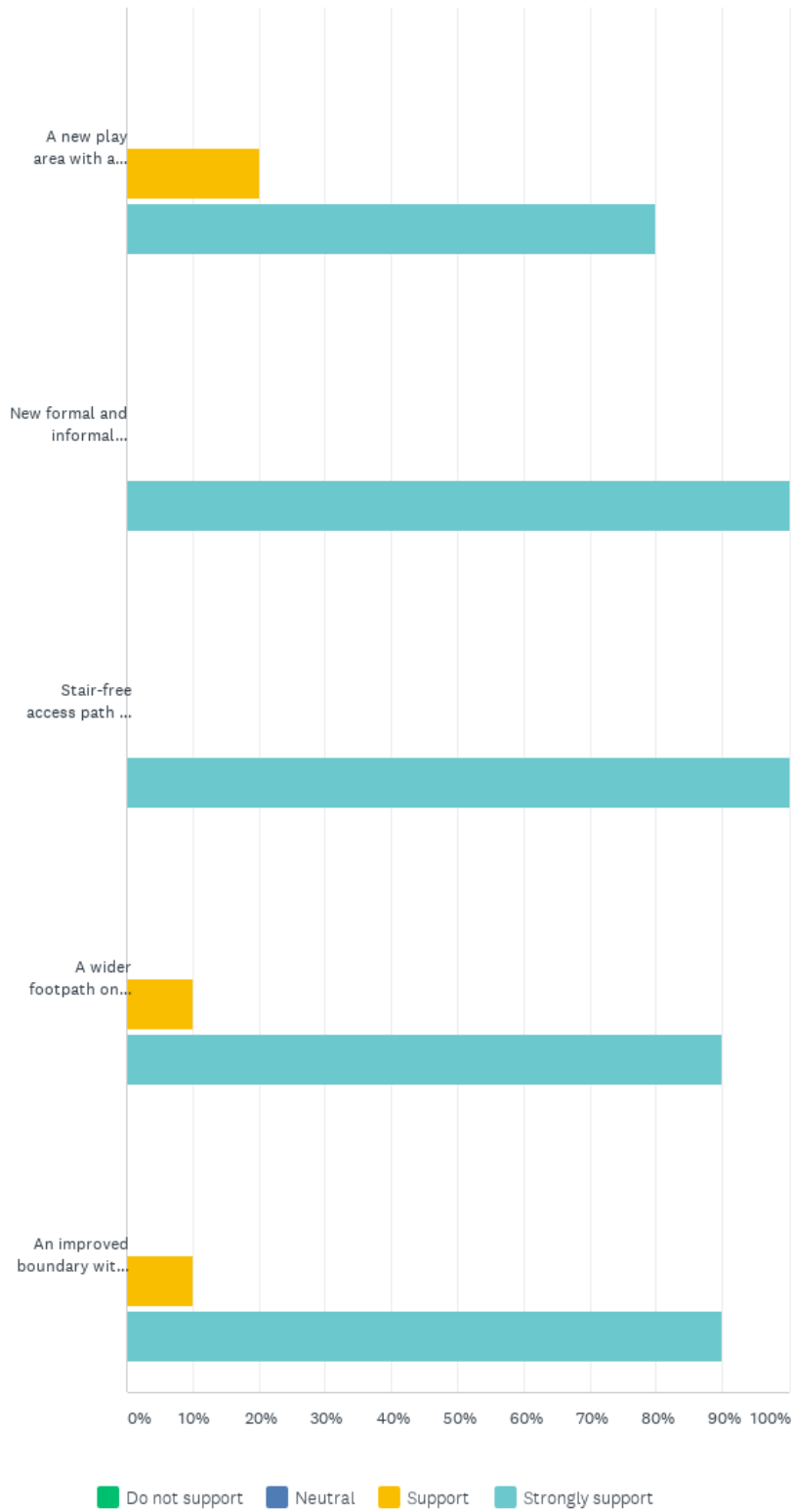
These comments are reflected in the draft concept plan which went to Public Exhibition.

Online feedback form - rating elements of the proposed upgrade

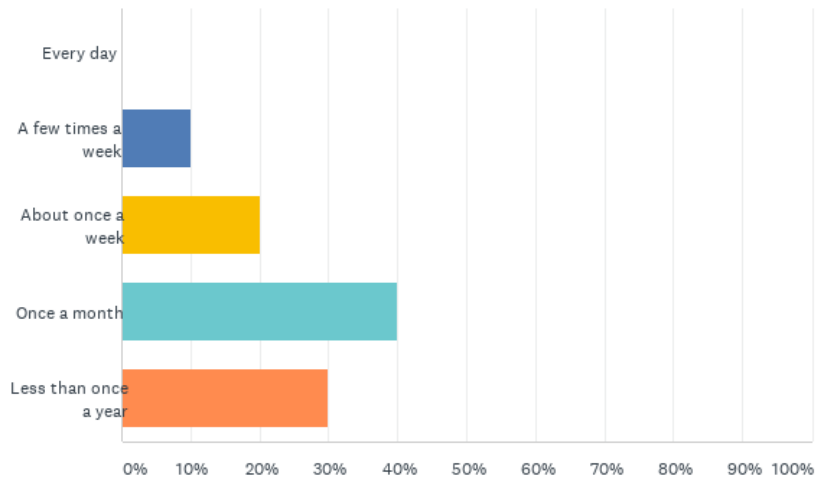
Respondents who completed the online feedback form were asked to rate how important elements of the proposed design were to them. The results are below.

Engagement report

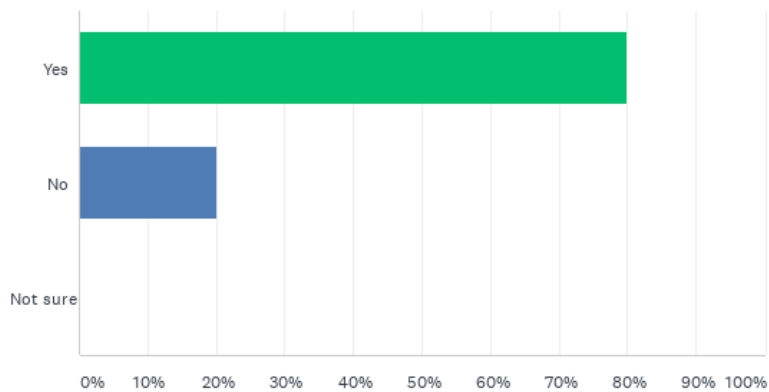
Q1 Do you support the following elements of the upgrade?



Q2 How often do you currently use the park?



Q3 Do you think that the upgrade would change your use of the park?



Subjects/topics raised in submissions

Several subjects/topics were raised in the feedback received. These were presented as concerns, suggestions and/or requests and are summarised below.

General		
Layout	Total	City of Sydney Response
Request for consideration of a shade structure. Two people suggested that this should be over the swing. One person suggested additional trees be planted on the northern side of playground.	4	Shade modelling will be completed for the site and equipment selected and located with consideration of this shade analysis. Due to the scale of this playground a shade sail is not supported.

Engagement report

Request for boundary fence to protect children from the road.	2	The new layout provides some informal barriers to the road through the seating wall, widened footpath, re-grading and planting. At this stage no fencing is proposed.
Request for outdoor gym equipment. One person suggested that this could be used by PCYC and the public.	3	The City has a park Fitness Equipment Plan which reviewed this location for fitness equipment. Fitness equipment was not recommended for this site.
Provide a water bubbler including a dog bowl.	1	A water bubbler with a dog bowl will be included as part of this upgrade.
Provide interpretive element which identifies first nations people walking the land and which gives recognition and inclusiveness for both Indigenous & Non-Indigenous people of the area.	1	The City is working with an Indigenous Cultural Consultant to assist with developing opportunities for engagement with and recognition of First Nations people within the local area and how this can be reflected on site as part of the park upgrade. This will be developed further in the detailed design phase.
Provide a BBQ area	1	BBQs are not currently being considered as part of this scope. The closest BBQ facilities are located at Harold Park Picnic area.
Provide a picnic area. One submission suggested including picnic tables.	2	A range of seating opportunities will be provided as part of the upgrade. These will include seats in sun and shade as well as seating with back rests and arm rests. No picnic tables are proposed as part of the upgrade due to proximity to residences. Picnic tables and BBQs are provided at Harold Park.
Provide additional seating. Two submissions requested that the seating is accessible and inclusive for people with a range of mobility concerns and disabilities. Particularly reflective of the LAHC tenants needs.	2	A City of Sydney bin will be provided as part of the upgrade.
Provide seating. The majority of LAHC tenants residing in close proximity to the park are aged 55 years (and over) and a high proportion have a disability.	1	
Provide a bin	1	A City of Sydney bin will be provided as part of the upgrade.
Provide a vegetable/community garden for local community to connect and for elderly residents to socialise	1	A community garden is not proposed as part of this scope. If residents are interested in being part of, or establishing a community garden further information can be found at https://www.cityofsydney.nsw.gov.au/community/participation/community-gardens

Engagement report

Provide accessible toilets.	1	The provision of Public toilets across the LGA are guided by the Public Toilet Strategy. This site is not nominated as part of this strategy and therefore are not proposed as part of this park upgrade.
Consider opportunity for community art installation	1	The City is guided by the Public Art Policy and the City Art – Public Art Strategy which guides and prioritises the development of art projects across the LGA. This site is not nominated as part of this strategy and therefore not being considered as part of this scope of works.
Extent of the habitat area has increased in area since it was installed.	1	Noted. This park is nominated as part of the Urban Habitat Strategy as a key link site. Therefore, it is anticipated that this will continue to expand over time.
Play space	Total	City of Sydney Response
Request for bongo drums	1	Musical play equipment is not proposed as part of this park upgrade due to proximity to residential units.
Request to provide traditional swings. One person noted that there are already nest swings installed at Wood Street Reserve and Ross Street Reserve.	2	Nest swings provide an opportunity for multiple children of multiple ages and a range of abilities to play together. The City will investigate if an additional swing can be accommodated in addition to the proposed nest swing.
Play space is not challenging for children over 3 years old nor suitable for people with more than 1 child	1	The proposed play offering is aimed at children aged 2-6. Alternate play areas with play equipment suitable for older age groups can be found at Ross Street Reserve, Harold Park and at Smith Hogan and Spindlers Park.
Planting	Total	City of Sydney Response
Current street tree planting results in the footpath being too narrow.	1	The proposed footpath widening will accommodate pedestrians and street trees.
Tree are dropping branches and maintenance of over-hanging trees on footpath needs to be completed	1	All trees which are managed by the City are regularly monitored for tree health and corrective action is undertaken as required. The trees on this site have been assessed as part of the project and an Arborist Report has been prepared.
New tree planting should not block sun or views from residences adjacent park	1	The City will review the location of any proposed trees with consideration of sightlines, shade and solar access.

Outside scope	Total	City of Sydney Response
Positive feedback of Glebe park upgrades over the years - "many upgrades of the Glebe parks over the last 20 years have been completely exceptional."	1	Noted.
Other comments	Total	City of Sydney Response
Does not support the design. Over the top and a waste of money.	1	Noted.

Consultation with Aboriginal and Torres Strait Islander Communities

A specialised indigenous consultant was engaged by the City's landscape architect to provide cultural advice and input on the design. Ideas raised during the indigenous consultation were:

- The significance of songlines and the story of water are key components in the inner City that can be able to all park projects and it would be good to see some connectivity between all parks.
- Suggestions re naming – using a person's name or an Aboriginal word that is connected to the park ie Nawi or tell the story of the She Oak also referred to as the Babysitting Trees or the Barra fish hook which connects to Eora fishing stories.

These ideas will be explored further during detailed design.

Engagement activities

Early engagement activities

Several activities were undertaken to engage residents living in the immediate area and key stakeholders to inform the development of the concept design.

1. Early engagement survey

From 5 November -19 November 2019, adjacent residents and key stakeholders were invited to fill out an early engagement survey or email feedback to the Sydney Your Say email address. Nine Submissions were received.

2. Email to key stakeholders

Ten groups were contacted about the proposal during the early engagement phase, including The Glebe Society, Friends of Orphan School Creek – Bushcare, Forest Lodge Public School, Police and Citizens Youth Club including the following groups using these facilities; The Talent Society, Gymbaroo, Karate Academy of Japan - Gojuryu Dojo and Youth and Family Connect.

3. Letter to residents

During the early engagement phase, a letter about the proposal was distributed to 156 residents living immediately adjacent to the park.

4. Children's Consultation at Police and Citizens Youth Club

On Thursday 10th October, the project team undertook a children's consultation with 30 children aged 5-12 who were attending a holiday program at the PCYC. Feedback from these meetings were fed into the development of the concept design.

Public exhibition activities

1. Sydney Your Say webpage

A Sydney Your Say webpage, <https://www.cityofsydney.nsw.gov.au/council/your-say/park-playground-upgrades/improving-minogue-crescent-reserve-forest-lodge> was created. The page included an electronic copy of the revised concept design, survey and other key information about the consultation.

2. Online feedback form via Survey Monkey

The community and stakeholders were able to give feedback using an online feedback form. A link to the feedback form was provided on the Sydney Your Say website.

3. Sydney Your Say e-News

The consultation was included in the Sydney Your Say 11 August 2020 e-Newsletter (7,348).

4. Consultation letter

A letter was posted to residents, inviting them to give feedback on the proposal. 156 letters were distributed.

5. Notification email

An email was sent to key stakeholders, including The Glebe Society, Friends of Orphan School Creek – Bushcare, Forest Lodge Public School, Police and Citizens Youth Club including the following groups using these facilities; The Talent Society, Gymbaroo, Karate Academy of Japan - Gojuryu Dojo and Youth and Family Connect.

An email was also sent to the following landowners: Sydney Water and Land and Housing Corporation.

6. On site signage

Two notice boards were installed at Minogue Crescent, inviting people to give feedback on the proposal.

7. Community meeting

A Zoom meeting was scheduled for 28 July, however no residents registered to attend.

8. On site meeting

The project team met with one resident on-site on the 18 August to discuss the project.

Appendix

Appendix A: concept design

Proposed works



- Key**
- Existing trees to be retained
 - New trees
 - Existing trees to be relocated
 - Existing habitat planting
 - Turf
 - New habitat planting
 - New bench seats
 - New round timber platform
 - New concrete path
 - Recycled brick paving
 - New mulch surface
 - New rubber softfall

- 01 New entry from street
- 02 New connection to PCYC
- 03 New central path
- 04 Open lawn area
- 05 New low seating wall
- 06 New basket swing
- 07 New hill slide and nature play
- 08 Shaded seating area in turf
- 09 Improved boundary to PCYC carpark
- 10 New planting to capture site stormwater
- 11 Existing habitat planting to be retained
- 12 Extension of existing habitat planting
- 13 Improved access to adjacent residences
- 14 Footpath widening on Minogue Crescent

0 1m 5m 15m

↑ NORTH

Minogue Crescent Reserve upgrade - community consultation plan

CITY OF SYDNEY

Improving Minogue Crescent Reserve, Forest Lodge



Under review

Contributions to this consultation are closed for evaluation and review. The project team will report back on key outcomes.

We plan to upgrade the park and playground at Minogue Crescent Reserve, Forest Lodge and invite your feedback on the proposed design.

Over the next 10 years, we will upgrade more than 60 parks across the City of Sydney area, from small pocket parks to larger local parks.

Quality green open spaces are a priority for our residents, workers and visitors. These park upgrades will create better quality open spaces for everyone to enjoy, help keep our city cooler, and support biodiversity in our local areas.

The proposal for Minogue Crescent Reserve includes:

- stair-free access path to the playground
- a new play area with a nest swing, slide mound and nature play areas
- better turf, more native plants and new trees
- new formal and informal seating in both the sun and shade
- a wider footpath on Minogue Crescent
- an improved boundary with the Police Citizens Youth Club.

To accommodate these improvements, we need to relocate 5 small *Liriodendron tulipifera* trees within the park. A total of 11 new trees (plus 5 relocated trees) will be planted as part of these works, increasing overall canopy cover in the park in line with our tree canopy targets.

How you can give feedback

You can [view the proposed design](#) and give your feedback by completing an online feedback form.

[Online form](#)

Consultation closes at **5pm on Monday 24 August 2020**.

Feedback may be published in publicly available reports at the end of the consultation period. Your name or organisation's name may appear in these reports with your feedback attributed. If you would like your feedback to be kept confidential, please let us know when making your submission.

Other ways to give your feedback

We want to make sure everybody has the opportunity to provide ideas and feedback.

If you prefer to talk to us in person, please contact the City of Sydney officer listed in contacts.

If you are Deaf or have a hearing or speech impairment you can contact us through the [National Relay Service](#). You will need to provide our phone number 02 9265 9333.

Key dates

Public consultation period
20 July to 24 August 2020

Online briefing
28 July 2020

Contacts

Helen Rogers
Design Manager

02 9265 9333
sydneyyoursay@cityofsydney.nsw.gov.au

Related projects

- [Park and playground upgrades](#)

Links

[Online form](#)



[Park upgrade plans](#)

Do you live, visit or work in Woolloomooloo, Zetland, Chippendale, Forest Lodge or Camperdown? We're upgrading parks and playgrounds in your local area. Let us know what you think of the proposed designs:

- [Peace Park, Chippendale](#)
- [Tote Park playground, Zetland](#)
- [Minogue Crescent Reserve, Forest Lodge](#)
- [Woolloomooloo Playground, Woolloomooloo](#)
- [Park on Lyons Road, Camperdown](#)

[Read more](#)

Engagement report

Appendix C: Consultation letter



THE LORD MAYOR OF SYDNEY
CLOVER MOORE

20 July 2020

Improving Minogue Crescent Reserve, Forest Lodge

The City of Sydney plans to upgrade Minogue Crescent Reserve in Forest Lodge and invite your feedback on the proposed design.

Over the next 10 years, we will upgrade more than 60 parks across the City of Sydney area, from small pocket parks to larger local parks. These park upgrades will create better-quality open spaces for everyone to enjoy, help keep our city cooler, and support biodiversity in our local areas.

The proposal for Minogue Crescent Reserve includes:

- stair-free access path to the playground
- a new play area with a nest swing, slide mound and nature play areas
- better turf, more native plants and new trees
- new formal and informal seating in both the sun and shade
- a wider footpath on Minogue Crescent
- an improved boundary with the Police Citizens Youth Club.

To accommodate these improvements, we need to relocate five small *lirodendron tulipifera* trees within the park. A total of 11 new trees (plus five relocated trees) will be planted as part of these works, increasing overall canopy cover in the park and in line with the City's tree canopy targets.

How to give feedback on the design

We know our residents, workers and visitors are focused on physical distancing and health and wellbeing, and many are experiencing economic stress. Visit cityofsydney.nsw.gov.au/covid19-response for more information on how the City is responding to the Covid-19 pandemic.

While how our staff will consult with you may look a little different, we still want to hear from you, and will provide plenty of opportunities to have your say on the projects and programs that affect you.

The proposed design is included with this letter. You can give feedback on this proposal at cityofsydney.nsw.gov.au/park-playground-upgrades by **5pm on 17 August 2020**.

We also invite you to a briefing on the proposed design with the project team via a Zoom video call on **Tuesday 28 July** from **6.15pm to 6.45pm**. Register to join this meeting at the link above by 5pm on Sunday 26 July. After you register, we will provide you with more information to set up the video call.

Next steps

We will report all feedback and any resulting design changes to Council. After Council resolves to proceed with the upgrade, we will continue to detailed design. We will keep you updated on the progress of this project.

Sydney Town Hall
483 George Street Sydney NSW 2000
Phone 02 9265 9229 Fax 02 9265 9328
cmoore@cityofsydney.nsw.gov.au

Sustainable
Sydney 2030

The time for action on
climate change is now

© OLM2020 004174 MINOGUE CRESCENT RESERVE

2

For more information about the project, please contact Helen Rogers, City Design Manager, on 9265 9333 or at sydneyyoursay@cityofsydney.nsw.gov.au.

Yours sincerely

Clover Moore
Lord Mayor of Sydney

CITY OF SYDNEY 

Have your say

Improving Minogue Crescent Reserve

We plan to upgrade Minogue Crescent Reserve and invite your feedback on the proposed design.

Over the next 10 years, we're upgrading more than 60 parks across the City of Sydney, from small pocket parks to larger local parks.

Quality green open spaces are a high priority for our residents, workers and visitors. This network of park upgrades will create better quality open spaces for everyone to enjoy, help keep our city cooler, and support biodiversity in our local areas.

You can view the proposed design and give feedback at cityofsydney.nsw.gov.au/park-playground-upgrades

Consultation closes at **5pm on Tuesday 11 August 2020.**

We also invite you to a briefing on the proposed design with the project team via a Zoom video call on **Tuesday 28 July from 6.15pm to 6.45pm**. Register to join this meeting at cityofsydney.nsw.gov.au/park-playground-upgrades by **5pm on Sunday 26 July**. We will provide you with more information to set up the video call.

For more information about the project, please contact Helen Rogers, Design Manager on **02 9265 9333** or email sydneyyoursay@cityofsydney.nsw.gov.au

Document is Restricted

Item 4.

Project Scope - Park on Lyons Road, Camperdown (Western Block) Upgrade

File No: X025409

Summary

This report outlines the proposed works for the upgrade of Park on Lyons Road (Western Block), Camperdown. This site has been identified as part of the Stage 15 small parks and playgrounds improvement program.

The project brief is to complete a whole park upgrade for the site following on from the temporary works completed by the City in 2012. The proposal responds to the evolving nature of the surrounding neighbourhood and community. The proposal provides a clear and flexible framework which will allow the park to continue to develop into the future. The proposed works include improved circulation, park edges and entries, turf areas, new trees and habitat landscape, additional seating, provision of fitness equipment and associated landscape improvements. Space for a Community Garden has been allocated.

Draft concept plans were presented to the community between 20 July and 24 August 2020 and exhibited on the City's website. The proposed works were well supported by the community and the responses highlighted that the community recognises the importance of this park as a key open space for local residents.

The project principles are to develop a welcoming and functional park with a strong landscape character, to provide a park framework which is flexible, containing a variety of park spaces and settings, useable turf areas, a range seating opportunities which encourage social interaction and use simple, robust, high quality materials which reflect the local neighbourhood character and facilities to provide a rich recreation facility for local residents.

Recommendation

It is resolved that Council:

- (A) endorse the scope of work improvements to the Park on Lyons Road, Camperdown, as described in the subject report and shown in the Revised Concept Plan as Attachment B to the subject report, for progression to relevant approvals, preparation of construction documentation, tender and construction; and
- (B) note the estimated project forecast as outlined in Confidential Attachment D to the subject report.

Attachments

- Attachment A.** Location Plan and Site Photos
- Attachment B.** Concept Plan
- Attachment C.** Engagement Report
- Attachment D.** Financial Implications (Confidential)

Background

1. The City has an ongoing small parks and playgrounds improvement program. This program is for parks which need upgrade or enhancement works, the replacement of end-of-life equipment, and to generally provide appropriate facilities for local residents.
2. The name of the site is currently documented as Western Block. For the purposes of community consultation and this report, the site is referred to as the Park on Lyons Road, noting the park name will be developed in parallel to this project.
3. The Park on Lyons Road, Camperdown, is an L-shape piece of land bound by Lyons Road to the east, Purkis Street to the south, Lambert Street to the north and the Booter Community Centre to the west. The site is approximately 1,745 square metres. The site is owned by the City of Sydney.
4. The area that includes the Park on Lyons Road is within the traditional homelands of the Gadigal and Wangal people, two of the 29 clan groups of the Sydney metropolitan area collectively referred to as the Eora Nation.
5. An Indigenous Cultural Consultant has been engaged as part of this upgrade process, to ensure the project contributes to recognising the City's Indigenous heritage, celebrating Aboriginal and Torres Strait Islander cultures in the public domain, and enriching local knowledge about the cultural landscape.
6. The Park on Lyons Road was established as a park in 2012, when the land was dedicated to the City as part of an adjacent planning agreement. This work transformed the site from a carpark, which was associated with a car workshop (1950s-2000s) and to the biscuit manufacturing of the area prior.
7. The existing site is predominately turf with a slight fall towards the corner of Lambert and Lyons Road. The temporary works included park tree planting and bench seats. A clear desire line is marked diagonally through the park.
8. The surrounding development is made up of residential warehouse conversions, new residential development, several public housing blocks, and a series of shops and cafes. No formal play equipment is being installed as part of this stage of works. This is a mitigation measure to address safety concerns.
9. The Park on Lyons Road was identified for upgrade as a phase two development of the site. These works aim to develop a clear park identity and character, a functional path network, clear and flexible programming of the site and general improvements to landscape amenity. Consultation undertaken by both the City and the University of Sydney identified interest in provision of a community garden, fitness equipment, playground and additional seating and picnic facilities.
10. The park is currently used by a range of residents for passive recreation including informal fitness and dog walking. The park has also been used for community events facilitated by the City and other community organisations including the Glebe Community Development Project such as tenant barbecues.

Draft Concept Plan

11. A concept plan was developed for the works and community consultation was undertaken (refer to Attachment B).
12. The concept plan sets the overall layout. The key principles are:
 - (a) develop a legible, functional and welcoming park;
 - (b) provide a park framework which is flexible so the site can continue to develop into the future;
 - (c) provide a useable turf area and fixed fitness equipment which improves the passive recreation facilities for local residents;
 - (d) provide a variety of park settings and a range of seating opportunities which encourage social interaction; and
 - (e) use simple, robust, high quality materials which reflect the local neighbourhood character.
13. The proposal includes the following works:
 - (a) open and clear entries to the park;
 - (b) a new central path connecting Lyons Road to Lambert Street;
 - (c) new seating area on the Lyons Road edge to create a buffer to the park, and a variety of other seating areas;
 - (d) two distinct turf areas;
 - (e) widened footpaths on Lambert Street and Lyons Road;
 - (f) a new fitness area with fixed equipment such as chin-up bars and bench press;
 - (g) new bins and bubbler with dog bowl;
 - (h) improvements to the site drainage through grading and rain gardens/swales;
 - (i) new tree planting and mass planting; and
 - (j) an area allocated for a future community garden.
14. This concept plan (Attachment B) identifies the site for a future community garden. The area allocated is approximately 300 square metres. Consultation to date has confirmed individual community interest and of a number of organisations already working locally with community gardens in the area including Community Greening - Royal Botanic Gardens and Mission Australia. The design and delivery of the community garden is not part of this scope of works.
15. An Indigenous Cultural Consultant has been engaged as part of this upgrade process to undertake Indigenous community engagement and institution/organisational consultation. The consultant has produced a 'Narratives' report, broadly identifies project opportunities for the integration of Indigenous themes and narratives.

16. The themes and narratives which were raised include:
 - (a) The park on Lyons Road is located between two known cultural landscapes of the Kangaroo grounds at Camperdown and the Johnstons Creek tributaries.
 - (b) Pathways as a development from the existing use of the site and the opportunity to express stories of movement, trade and meeting.
 - (c) Stories of the Cadi plant - grass trees.
 - (d) Indigenous Food Gardens which link to the proposed community garden.
 - (e) Naming of the site to consider referencing contemporary people and stories rather than traditional.
17. The engagement process highlighted that stakeholders were interested in seeing the demonstration of culture in the design of the parks. This was predominantly expressed through a desire to see Aboriginal themed inclusions in the design such as artwork, language, and native plants.
18. As part of the next stage of the upgrade, the consultant will review how the key themes and narratives should be implemented into the project design and delivery.
19. In response to community feedback, the following will be investigated and where possible incorporated into a detailed design as noted on Attachment B:
 - (a) The extent of turf will be reviewed to ensure it is maximised across the site.
 - (b) Further consultation with community members will be undertaken with reference to the community garden works.
 - (c) The provision of services such as power and water within the park will be reviewed.
20. The following tree management and planting is proposed as part of the park works:
 - (a) removal and replacement of three trees (2 *Angophora costata* and 1 *Argyrodendron actinophyllum*) to maximise open turf areas;
 - (b) retain and protect nine existing trees;
 - (c) eleven additional trees to be planted across the site; and
 - (d) preparation of an Aboricultural Impact Assessment and Tree Protection Plan to inform the detailed design and ensure appropriate construction methodology.
21. A Review of Environmental Factors (REF) will be lodged for the works in accordance with the Environmental Planning Assessment 1979 and the State Environmental Planning Policy Infrastructure 2007.

Key Implications

Strategic Alignment - Sustainable Sydney 2030

22. Sustainable Sydney 2030 is a vision for the sustainable development of the City to 2030 and beyond. It includes 10 strategic directions to guide the future of the City, as well as 10 targets against which to measure progress. This report is aligned with the following strategic directions and objectives:
 - (a) Direction 6 - Vibrant Local Communities and Economies - this project will provide an improved open space infrastructure which meets the needs of a wide variety of user groups and provides opportunities for social interaction.
 - (b) Direction 9 - Sustainable Development, Renewal and Design - this project is part of wider program of ongoing renewal of small parks across the local government area; it will provide improved quality of open space infrastructure.

Organisational Impact

23. This upgrade will provide an improved park amenity and facilities for all community members visiting the park. The assets will require ongoing maintenance.

Risks

24. Risk of ongoing anti-social behaviour within the park. This includes potential vandalism of any works undertaken, drug-use and related paraphernalia and general anti-social behaviour. Crime Prevention through Environmental Design (CPTED) principles will be applied during the detailed design including ensuring passive surveillance is achieved and appropriate lighting levels are provided.
25. Risks of not implementing this scope of works could result in failure to meet community expectations.

Social / Cultural / Community

26. The site is an important open space within an increasingly dense residential area where people have limited private open space. The site provides a place for people to meet, walk their dogs, drink a take-away coffee, and access services from local community organisations. The Park is co-located with the Booter Community Centre. Improving the amenity and function of the park represents an important investment in this community, providing opportunities for people of different ages and abilities to use the park alongside each other.
27. An Indigenous Cultural Consultant has been engaged as part of this upgrade process, to ensure that the project contributes to recognising the City's Indigenous heritage, celebrating Aboriginal and Torres Strait Islander cultures in the public domain, and enriching local knowledge about the cultural landscape.
28. The proposed future Community Garden is supported by a number of local residents and a range of other organisations including The Growers at Mission Australia, Wildflower - Gardens for Good, Community Greening (Royal Botanic Garden). These organisations are interested in partnering with the City for the purposes of connecting people to each other, to food and place and increasing community resilience in these times of pandemic/environmental degradation.

Environmental

29. Protection and enhancement of the existing tree planting through these works is in line with the Urban Forest Strategy.

Financial Implications

30. There are sufficient funds in the current year capital budget and future year forward estimates. Current cost estimates and financial implications are detailed in Confidential Attachment D. Note this does not include budget for the future community garden.

Relevant Legislation

31. Local Government Act 1993 - Section 10A provides that a Council may close to the public so much of its meeting as comprises information that would, if disclosed, confer a commercial advantage on a person with whom the Council is conducting (or proposes to conduct) business.
32. Attachment D to the subject report contains confidential commercial information which if disclosed, would confer a commercial advantage on a person with whom Council is conducting (or proposes to conduct) business.
33. Discussion of the matter in an open meeting would, on balance, be contrary to the public interest because it would compromise Council's ability to negotiate fairly and commercially to achieve the best outcome for its rate payers.
34. Environmental Planning and Assessment Act 1979.
35. State Environmental Planning Policy Infrastructure 2007.
36. Sydney Local Environmental Plan 2012.
37. Disability Discrimination Act 1992.
38. Companion Animals Act 1998.

Critical Dates / Time Frames

39. Current Program Dates
 - (a) Council Approval of Concept Design October 2020
 - (b) Detailed Design October 2020
 - (c) Tender July 2021
 - (d) Construction Start November 2021
 - (e) Construction Duration 20 weeks

Options

40. Proceed with progression of improvement works as outlined in this subject report including relevant approvals, preparation of construction documentation, tender and construction.
41. Proceed with progression of improvement works including the community garden as outlined in this subject report including relevant approvals, preparation of construction documentation, tender and construction. Noting additional funds will be sought.
42. Project does not proceed - this option is not recommended due to the current condition of the park and anti-social behaviour within the site as previously outlined in this report.

Public Consultation

43. Public consultation was undertaken as a two-part process: pre-consultation/early engagement and public consultation/exhibition. For a detailed description of the consultation process and findings refer to Attachment C.
44. A pre-consultation notification letter/email was issued to a number of local stakeholders and 48 residents to notify them of the project, provide a link to a pre-consultation survey and offer to meet on site to discuss the proposed upgrade.
45. There were 14 submissions during the pre-consultation period.
46. The public consultation / exhibition involved the following:
 - (a) a letter sent to 617 residents about the concept design and inviting them to provide feedback;
 - (b) a stakeholder email sent to local stakeholders, inviting them to give feedback on the proposal. The email was sent to:
 - (i) Mission Australia - Common Ground;
 - (ii) Joanna O'Dea Court - NSW Family and Community Services;
 - (iii) Pocket City Farms, Camperdown;
 - (iv) Forest Lodge Public School;
 - (v) Glebe Public School; and
 - (vi) Glebe Community Development Project;
 - (c) a webpage on SydneyYourSay showing the plans for the consultation from 20 July to 24 August 2020;
 - (d) Two Have Your Say A2 panels were installed in the park notifying the park users of the proposed works, providing contact details of the Design Manager and a web address to the SydneyYourSay page;

- (e) an online briefing was scheduled for 28 July. Six people attended; and
 - (f) attendance at two of the weekly barbecues arranged by the Glebe Community Development Project to directly connect with residents who may not have access to online platforms. Fifteen to twenty people attended each.
47. There were 25 submissions received during the consultation feedback. This included submissions via email and the online feedback form.
48. The proposed works were well supported by the community and the responses highlighted that the community recognises the importance of this park as a key piece of open space for local residents.
49. There were two main areas of comments including: broader comments on the park amenity, its layout and specific comments about the community garden.
50. Key feedback included:
- (a) Four submissions requested a play element or playground. No formal play equipment is being installed as part of this stage of works. This is a mitigation measure to address safety concerns associated with the current high level of anti-social behaviour within the area.
 - (b) Support for maximising the turf area.
 - (c) 60 per cent of respondents supported or strongly supported the fitness equipment.
 - (d) 70 per cent of respondents supported or strongly supported the community garden.
 - (e) A number of respondents raised concern around the anti-social behaviour in the park.
 - (f) Two submissions requested lighting to be provided. Lighting will be provided on the main path through the park.
 - (g) Four submissions requested bins were installed, including two requests for dog litter bins. Bins will be installed as part of the upgrade.
 - (h) Three submissions were concerned with having an improved edge/boundary, including one submission suggesting the park was fenced. A clear boundary to the park is proposed through planting and paving. No fencing is proposed as part of these works.
 - (i) One submission requested provision of access to power and water within the reserve for community events. This will be reviewed as part of the detailed design.
51. There was one submission made on behalf of Mission Australia and the following affiliated organisations; Wildflower – Gardens for Good, The Growers at Mission Australia and Community Greening – The Royal Botanic Garden. The project team is working with the Community Garden Coordinator to respond to this submission.

52. In response to community feedback, the following will be investigated and where possible incorporated into a detailed design as noted on Attachment B:
- (a) The extent of turf will be reviewed to ensure it is maximised across the site.
 - (b) Further consultation with community members will be undertaken with reference to the community garden works.
 - (c) The provision of services such as power and water within the park will be reviewed.
53. Indigenous community engagement and institution/organisational consultation was lead by the Indigenous Cultural Consultant engaged as part of this upgrade process.
54. As part of the next stage of the upgrade, the Indigenous Cultural Consultant will work with the project team to identify how the key themes and narratives identified from the consultation should be implemented into the project design and delivery.

AMIT CHANAN

Director City Projects and Property

Helen Rogers, Design Manager

Attachment A

Location Plan and Site Photos



© City of Sydney Council 2020. All Rights Reserved. This map has been compiled from various sources and the publisher and/or contributors accept no responsibility for any injury, loss or damage arising from the use, error or omissions therein. While all care is taken to ensure a high degree of accuracy, users are invited to notify Council's Spatial Services of any map discrepancies. No part of this map may be reproduced without written permission.

**View from Lambert Street
south-east**



**Booler Community Centre on
western boundary**



**View from corner of Lambert
Street and Lyons Road**



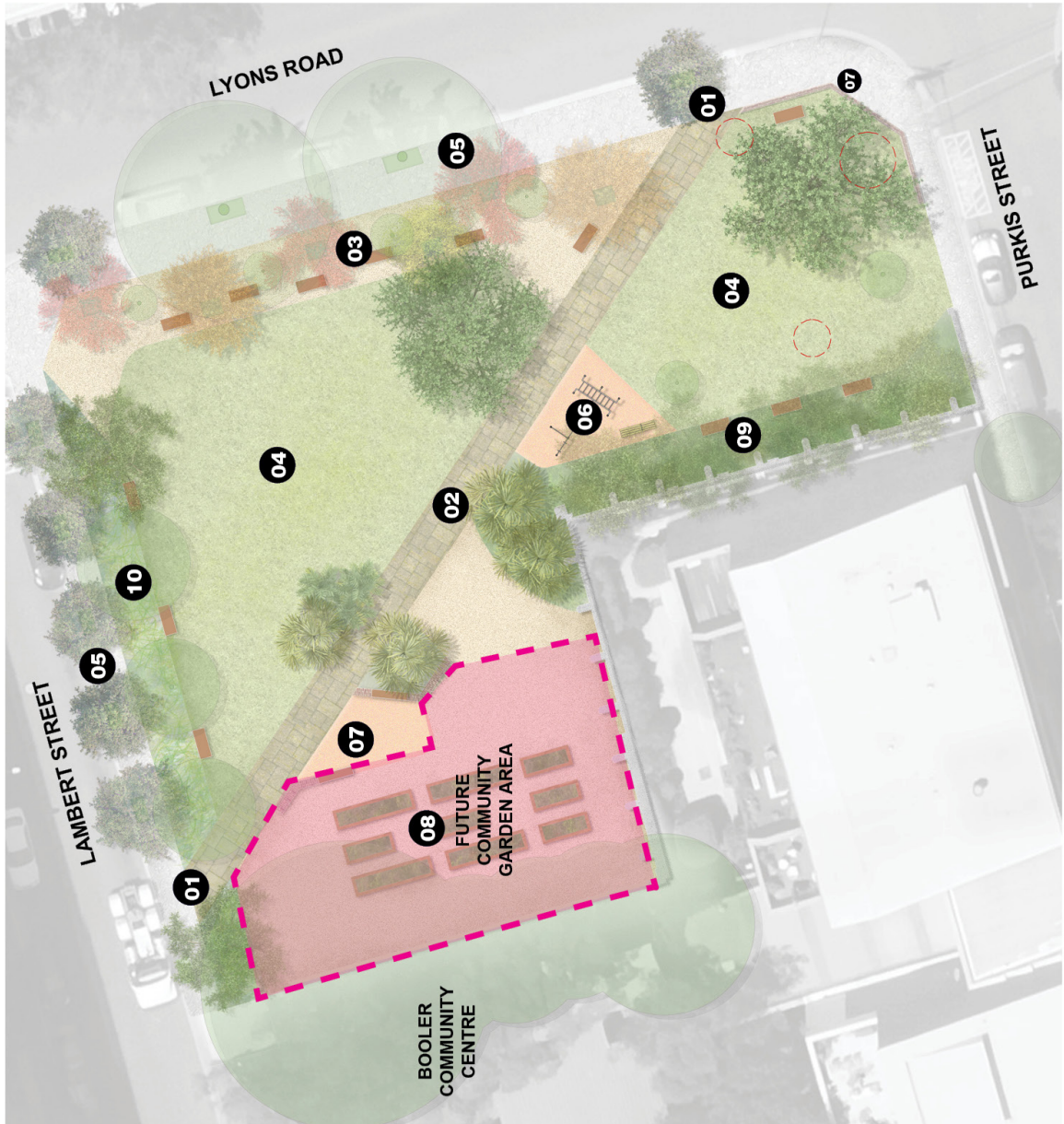
**View from corner of Lyons Road
and Purkis Street north-west**



Attachment B

Concept Plan

Park on Lyons Road



Key

	Existing trees to be retained		Asphalt footpath
	New trees		New central path
	Existing trees to be removed		Decomposed granite
	Turf		Rubber softfall
	New planting		Bench seats

Proposed works

- 01** New entries to the park
- 02** New central path connecting Lyons Road to Lambert Street
- 03** New seating area on park edge providing a buffer to the park
- 04** Open lawn area
- 05** Widened footpaths on Lambert Street and Lyons Road
- 06** New fitness equipment area
- 07** Secondary fitness equipment area (optional) with seating walls
- 08** Community garden area (space allocated to be delivered separately as part of future works)
- 09** New planting and seats on boundary wall
- 10** New garden bed to manage site stormwater

In response to community feedback, the following will be investigated and where possible incorporated into the detailed design. These are as follows:

- The extent of turf will be reviewed to ensure across the site it is maximised.
- Further consultation with community members will be undertaken with reference to the community garden works.
- The provision of services such as power and water within the park will be reviewed.

Attachment C

Engagement Report



Engagement report

Park on Lyons Road, Camperdown

October 2020



Contents

Background	3
Engagement summary	4
Key findings	5
Engagement activities	11
Appendix	13

Background

Over the next 10 years, we're upgrading more than 60 parks across the City of Sydney area, from small pocket parks to larger local parks.

Quality green open spaces are a high priority for our residents, workers and visitors. This network of park upgrades will create better quality open spaces for everyone to enjoy, help keep our city cooler, and support biodiversity in our local areas.

Prior to finalising the designs, we are consulting the community and stakeholders on these proposed park improvements. In 2020, we consulted on our stage 15 parks, which include:

- Minogue Crescent, Forest Lodge
- Peace Park, Chippendale
- Tote Park, Zetland
- Woolloomooloo Playground, Woolloomooloo
- **Park on Lyons Road, Camperdown**

Engagement summary

From 20 July to 24 August 2020, we asked the community for feedback on a concept plan to improve the park on Lyons Road in Camperdown.

Consultation on the plan provided an opportunity for stakeholders and the community to review and comment on the design.

Consultation activities included online engagement, a letter to residents and project signage at the park.

This report outlines the community engagement activities that took place to support the consultation and summarises the key findings from the consultation.

Purpose of the engagement

The purpose of the engagement was to:

- gather feedback from stakeholders and the community about the proposed upgrade
 - determine the level of satisfaction with the revised concept design.
-

Outcomes from the engagement

Submissions received during consultation

We received a total of 25 submissions (via Survey Monkey, email and phone) during the public exhibition period. The Sydney Your Say page was visited 261 times during the consultation period.

One submission was made on behalf of Mission Australia and the following affiliated organisations; Wildflower – Gardens for Good, The Growers at Mission Australia and Community Greening – The Royal Botanic Garden.

Key findings

Early engagement

Early engagement with residents took place in November 2019 to help inform the concept design. The early engagement highlighted that in its current form the park feels very open and empty. The respondents made a number of suggestions including formalising the diagonal path, provision of fitness equipment, request for additional planting (trees and gardens) and to provide more shade. Meeting with community members interested in the Community Garden highlighted the opportunities of this site to support such a program.

Meeting with the Glebe Community Development Project representative provided further suggestions around the type of programming suitable for the site such as spaces for social gathering, open space for people with dogs and support for fitness equipment.

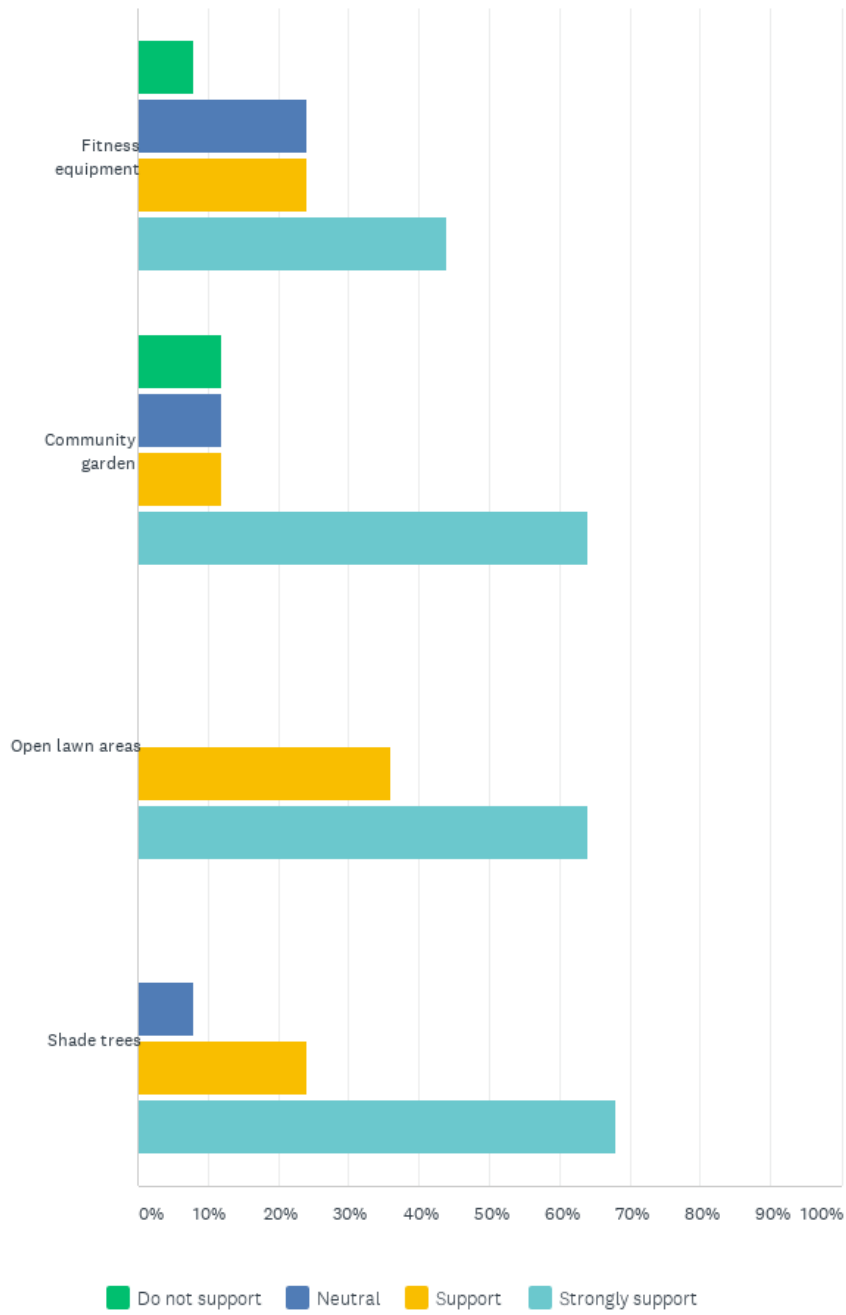
These comments are reflected in the draft concept plan which went to Public Exhibition.

Online feedback form - rating elements of the proposed upgrade

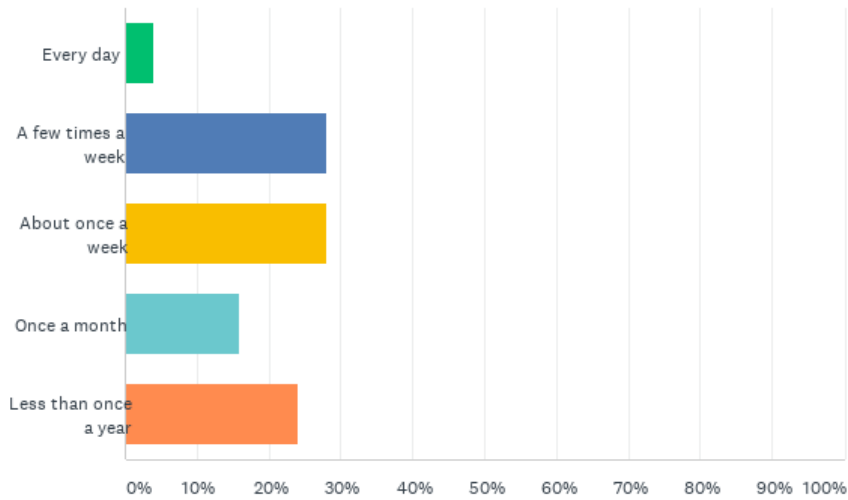
Respondents who completed the online feedback form were asked to rate how important elements of the proposed design were to them. 25 people completed the survey. The results are below

Engagement report

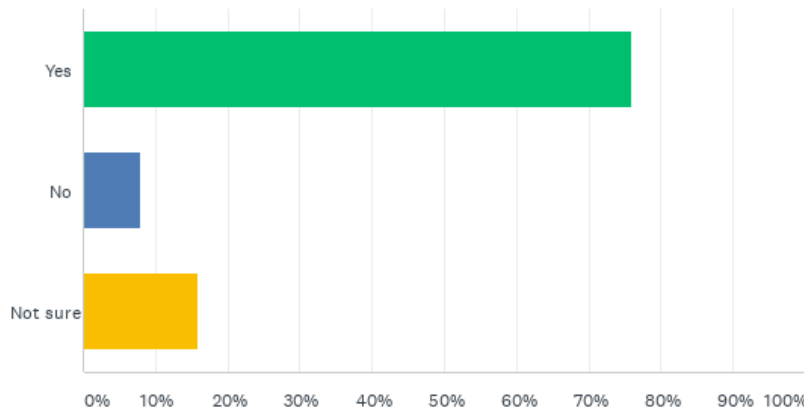
Q1 Do you support the following elements of the upgrade?



Q2 How often do you currently use the park?



Q3 Do you think that the upgrade would change your use of the park?



Subjects/topics raised in submissions

Several additional subjects/topics were raised in the feedback received. These were presented as concerns, suggestions and/or requests and are summarised below.

General		
Layout/Elements	Total	City of Sydney Response
Provide lighting to the park to increase safety.	2	Lighting will be provided to the park in line with the City Lighting Code. This will include lighting of the main pedestrian path through the park.

Engagement report

Provide bins. Two people requested that dog litter bins are provided.	4	Bins with dog litter bags will be provided as part of the upgrade.
Support for fitness equipment eg. chin up bar, bench, steps and softfall area for stretching	3	Noted. The fitness area will include a range of fixed equipment.
Fitness equipment not supported.	2	Noted. Fitness equipment on this site responded to pre-consultation feedback. It is understood that one of the existing uses of the park is for informal fitness work-outs and the aim of the upgrade is build-upon the existing uses of the park. All equipment will be rigid and robust.
Request to provide seating and tables.	1	Bench seats will be provided as part of this upgrade. The provision of picnic tables will be investigated as part of the detailed design phase.
Request to provide shade sails	1	Noted. Shade will be provided through the provision of additional tree planting on the site. Other shade types will be investigated as part of the detailed design.
Concern that there is excessive amount of seating for size of park. One person suggested that all seats should be removed on Lyons Road.	2	A range of seating opportunities is considered a key principle for all park upgrades. This means that the City aims to provide seating in both sun and shade at various times of the year, as well as seating which accommodates a variety of abilities.
Request for improved boundary condition. Consider fencing the park. One person suggested that this could include raised planter boxes or plants as an edge.	3	As part of the upgrade the City is aiming to provide a greater sense of boundary and protection within the reserve. This will be achieved through a range of measures; planting, change in materials and low seating walls. At this stage fencing is not included as part of the scope.
Request that the turf area is maintained. Rather than additional footpaths or fitness equipment.	2	Extent of turf will be reviewed as part of the detailed design phase.
Request for a play area. Two people suggest this should be for young children.	4	The proposed works to the park aim to provide improved amenity within the park to support the range of existing uses. At this stage due to the ongoing anti-social behaviour in the area, a playground is not supported at this time. The proposal sets up a flexible layout which could consider a play area in the future.
Request for a basketball court.	1	Due to the close proximity to residential properties, a basketball court is not being considered as part of this scope.
Request for an area for children to ride bikes, scooters, skateboards away from the road.	1	The new path will provide an area which could be used for scooters etc. A dedicated scooter area is not being considered as part of this scope.
Suggestion that Lyons Road is reduced in width to increase the park size.	1	Current planning nominates Lyons Road an industrial road. There is planning provision for this road to become a local road in the future. At this time the road layout and relationship to the park will be considered.
Request for space for mobile services van to pull up, including access to power and water	1	Noted. Provision of services will be considered as part of the detailed design phase.

Engagement report

Request for more trees to provide protection from the road and feel like a sanctuary.	1	The proposed planting and design layout aims to provide protection from the existing road and a sense of enclosure within the park. This however also needs to be balanced against the need for clear sightlines and access into and through the park.
Support for the access path through the centre	1	Noted.
Concern that the works will exacerbate the anti-social behaviour within the park, including drug use.	1	Design principles which focus on general safety and crime prevention are considered throughout the design process. The concerns are noted and will be addressed through a Design Safety Assessment. Consideration will be given to clear sightlines, lighting, passive surveillance, plant heights etc.
Suggestion for improved integration with the Booler Centre and with integration with the adjacent public housing. A social enterprise cafe.	1	The proposed works set up a flexible framework for the park to develop into the future. A key principle is to have an improved interface with the Booler Centre whilst retaining flexibility on this edge for the site to develop/change in the future.
Request to fix the drainage in the park.	1	As part of all park upgrades, how water is managed on site is important. Through the detailed design phase, detailed drainage plans will be prepared.
Community Garden	Total	City of Sydney Response
Support for community garden	5	Noted.
Community garden not supported. One person suggested that it could be used for other purposes. Another person did not think it would be well used.	2	Noted. The City has a rigorous system in place to ensure the success of community gardens. Should you require any further information please refer to https://www.cityofsydney.nsw.gov.au/community/participation/community-gardens
Suggestion for community garden to include bush-tucker.	1	The detail of the community garden will be developed in collaboration with the active community garden group.
Suggestion community garden includes community compost.	1	The detail of the community garden will be developed in collaboration with the active community garden group.
Project scope / timing / budget	Total	City of Sydney Response
Concern that the upgrade cannot take too long. A lot of local residents use that park for their dogs, and there is nowhere close by while this work is done.	1	Noted. Construction timing will be worked through at detailed design phase.

Consultation with Aboriginal and Torres Strait Islander Communities

A specialised indigenous consultant was engaged by the City's landscape architect to provide cultural advice and input on the design. Ideas raised during the indigenous consultation were:

- The significance of songlines and the story of water are key components in the inner City that can be able to all park projects and it would be good to see some connectivity between all parks.
- Participants encouraged the use of people's names from contemporary times as opposed to traditional. It was hoped that this would lead to curiosity in the person and encourage people to find out more about that person.

These ideas will be explored further during detailed design.

Engagement activities

Early engagement activities

Several activities were undertaken to engage residents living in the immediate area and key stakeholders to inform the development of the concept design.

1. Early engagement survey

From 5 November -19 November 2019, adjacent residents and key stakeholders were invited to fill out an early engagement survey or email feedback to the Sydney Your Say email address. Nine Submissions were received.

2. Email to key stakeholders

Ten groups were contacted about the proposal during the early engagement phase, including The Glebe Society, Friends of Orphan School Creek – Bushcare, Forest Lodge Public School, Police and Citizens Youth Club including the following groups using these facilities; The Talent Society, Gymparoo, Karate Academy of Japan - Gojuryu Dojo and Youth and Family Connect.

3. Letter to residents

During the early engagement phase, a letter about the proposal was distributed to 20 residents living immediately adjacent to the park.

4. Engagement with Public Housing Tenants

The project was flagged at the Glebe/Camperdown Social Housing forum. The project team met with the Glebe Community Development Project who had previously collaborated with USYD students to engage with local residents on the potential of this site through the 'Green Space Project'.

5. Community Garden

The project team met with two residents who have previously expressed interest in a community garden on the site.

Public exhibition activities

1. Sydney Your Say webpage

A Sydney Your Say webpage, <https://www.cityofsydney.nsw.gov.au/council/your-say/park-playground-upgrades/improving-park-lyons-road-camperdown> was created. The page included an electronic copy of the revised concept design, survey and other key information about the consultation.

2. Online feedback form via Survey Monkey

The community and stakeholders were able to give feedback using an online feedback form. A link to the feedback form was provided on the Sydney Your Say website.

3. Sydney Your Say e-News

The consultation was included in the Sydney Your Say 11 August 2020 e-Newsletter (7,348 subscribers).

4. Consultation letter

A letter was posted to residents, inviting them to give feedback on the proposal. 617 letters were distributed.

5. Notification email

An email was sent to key stakeholders, Mission Australia - Common Ground, Joanna O'Dea Court - NSW Family and Community Services, Pocket City Farms, Camperdown, Forest Lodge Public School, Glebe Public School and the Glebe Community Development Project.

6. On site signage

Two notice boards were installed at the park on Lyons Road, inviting people to give feedback on the proposal.

7. Community meeting

A Zoom meeting was scheduled for 28 July, 5 community members attended.

8. Resident/Glebe Community Development Project BBQ's

The project team attended two of the weekly BBQs which are facilitated by the Glebe Community Development Project to meet with tenants and discuss the project. This allowed for community members who may not have access to online services to provide input to the project.

Appendix

Appendix A: concept design



Key

	Existing trees to be retained		Asphalt footpath
	New trees		New central path
	Existing trees to be removed		Decomposed granite
	Turf		Rubber softfall
	New planting		Bench seats

- Proposed works**
- 01 New entries to the park
 - 02 New central path connecting Lyons Road to Lambert Street
 - 03 New seating area on park edge providing a buffer to the park
 - 04 Open lawn area
 - 05 Widened footpaths on Lambert Street and Lyons Road
 - 06 New fitness equipment area
 - 07 Secondary fitness equipment area (optional) with seating walls
 - 08 Community garden area (space allocated to be delivered separately as part of future works)
 - 09 New planting and seats on boundary wall
 - 10 New garden bed to manage site stormwater

Improving the park on Lyons Road, Camperdown



Under review

Contributions to this consultation are closed for evaluation and review. The project team will report back on key outcomes.

We plan to upgrade the park at Lyons Road, Camperdown and invite your feedback on the proposed design.

Over the next 10 years, we will upgrade more than 60 parks across the City of Sydney area, from small pocket parks to larger local parks.

Quality green open spaces are a priority for our residents, workers and visitors. These park upgrades will create better quality open spaces for everyone to enjoy, help keep our city cooler, and support biodiversity in our local areas.

The proposal for the park on Lyons Road includes:

- new park entries, paths and lighting
- new seating area on the Lyons Road edge
- wider footpaths on Lambert Street and Lyons Road
- new fitness equipment
- open lawn areas and new plants, trees and seats
- a new swale to manage stormwater
- space for a community garden next to the Booter Community Centre.

To accommodate these improvements, we need to remove 3 small trees (2 *angophora costata* and 1 *argyrodendron actinophyllum*). A total of 11 new trees will be planted as part of these works, increasing overall canopy cover in the park in line with our tree canopy targets.

How you can give feedback

You can [view the proposed design](#) and give your feedback by completing an online feedback form.

[Online form](#) ↗

Consultation closes at **5pm on Monday 24 August 2020**.

Feedback may be published in publicly available reports at the end of the consultation period. Your name or organisation's name may appear in these reports with your feedback attributed. If you would like your feedback to be kept confidential please let us know when making your submission.

Key dates

Public consultation period
20 July to 24 August 2020

Online briefing
28 July 2020

Contacts

Helen Rogers
Design Manager

02 9265 9333
sydneyyoursay@cityofsydney.nsw.gov.au

Related projects

- [Park and playground upgrades](#)

Links

[Online form](#) ↗



[Park upgrade plans](#)

Do you live, visit or work in Woolloomooloo, Zetland, Chippendale, Forest Lodge or Camperdown? We're upgrading parks and playgrounds in your local area. Let us know what you think of the proposed designs:

- [Peace Park, Chippendale](#)
- [Tote Park playground, Zetland](#)
- [Minogue Crescent Reserve, Forest Lodge](#)
- [Woolloomooloo Playground, Woolloomooloo](#)
- [Park on Lyons Road, Camperdown](#)

[Read more](#)

Engagement report

Appendix C: Consultation letter



THE LORD MAYOR OF SYDNEY
CLOVER MOORE

20 July 2020

Improving the park on Lyons Road, Camperdown

The City of Sydney plans to upgrade the park on the corner of Lyons Road and Lambert Street in Camperdown and invite your feedback on the proposed design.

Over the next 10 years, we will upgrade more than 60 parks across the City of Sydney area, from small pocket parks to larger local parks. These park upgrades will create better-quality open spaces for everyone to enjoy, help keep our city cooler, and support biodiversity in our local areas.

The proposal for the park on Lyons Road includes:

- new park entries, paths and lighting
- a new seating area on the Lyons Road edge
- wider footpaths on Lambert Street and Lyons Road
- new fitness equipment
- open lawn areas and new plants, trees and seats
- a new swale to manage stormwater
- space for a community garden next to the Booler Community Centre.

To accommodate these improvements, we need to remove three small trees (two angophora costata and one argyrodendron actinophyllum). A total of 11 new trees will be planted as part of these works, increasing overall canopy cover in the park and in line with the City's tree canopy targets.

If you are interested in being part of the future community garden, please let us know via the survey on the City's website at cityofsydney.nsw.gov.au/council/your-say and our community garden coordinator will be in contact.

How to give feedback on the design

We know our residents, workers and visitors are focused on physical distancing and health and wellbeing, and many are experiencing economic stress. Visit cityofsydney.nsw.gov.au/covid19-response for more information on how the City is responding to the Covid-19 pandemic.

While the way our staff will consult with you may look a little different, we still want to hear from you and will provide plenty of opportunities to have your say on the projects and programs that affect you.

The proposed design is included with this letter. You can give feedback on this proposal at cityofsydney.nsw.gov.au/park-playground-upgrades by **5pm on 17 August 2020**.

We also invite you to a briefing on the proposed design with the project team via a Zoom video call on **Tuesday 28 July from 7pm to 7.30pm**. Register to join this meeting at the link above by 5pm on Sunday 26 July. After you register, we will provide you with more information to set up the video call.

Sydney Town Hall
483 George Street Sydney NSW 2000
Phone 02 9265 9229 Fax 02 9265 9328
cmoore@cityofsydney.nsw.gov.au

Sustainable
Sydney 2030

The time for action on
climate change is now

© OLM2020 004175 PARK ON LYONS ROAD

2

Next steps

We will report all feedback and any resulting design changes to Council. After Council resolves to proceed with the upgrade, we will continue to detailed design. We will keep you updated on the progress of this project.

For more information about the project, please contact Helen Rogers, City Design Manager, on 9265 9333 or at sydneyyoursay@cityofsydney.nsw.gov.au.

Yours sincerely

Clover Moore
Lord Mayor of Sydney



Have your say

Improving the park on Lyons Road

We plan to upgrade the park on Lyons Road and invite your feedback on the proposed design.

Over the next 10 years, we're upgrading more than 60 parks across the City of Sydney, from small pocket parks to larger local parks.

Quality green open spaces are a high priority for our residents, workers and visitors. This network of park upgrades will create better quality open spaces for everyone to enjoy, help keep our city cooler, and support biodiversity in our local areas.

You can view the proposed design and give feedback at cityofsydney.nsw.gov.au/park-playground-upgrades

Consultation closes at **5pm on Tuesday 11 August 2020.**

We also invite you to a briefing on the proposed design with the project team via a Zoom video call on **Tuesday 28 July from 7pm to 7.30pm**. Register to join this meeting at cityofsydney.nsw.gov.au/park-playground-upgrades by **5pm on Sunday 26 July**. We will provide you with more information to set up the video call.

For more information about the project, please contact Helen Rogers, Design Manager on **02 9265 9333** or email sydneyyoursay@cityofsydney.nsw.gov.au

Document is Restricted

Item 5.

Project Scope - Tote Park Playground Upgrade, Zetland

File No: X025418

Summary

This report outlines the proposed works for the upgrade of the playground at Tote Park, Zetland. Tote Park playground has been identified as part of the Stage 15 small parks and playgrounds improvement program for replacement of end of life play equipment.

The project brief is to refurbish the existing play area including replace end of life equipment and soft fall, and continue to provide a range of play experiences for children of different ages and abilities (targeting ages 0-8).

Draft concept plans were presented to the community between 20 July and 24 August 2020 and exhibited on the City's website. The proposed works were well supported by the community and the responses highlighted that the playground and its play offering is well used and well loved. Suggestions by the community which will be investigated during detailed design have been noted on the draft concept plans.

The key principles of the proposal are to protect and enhance the existing landscape character, provide a local scale play space which improves the play opportunities for local children, provide a range of seating opportunities which encourage social interaction and use simple, robust, high quality materials which reflect the local neighbourhood character.

Recommendation

It is resolved that Council:

- (A) endorse the scope of work improvements to the playground at Tote Park, Zetland, as described in the subject report and shown in the Revised Concept Plan at Attachment B to the subject report, for progression to relevant approvals, preparation of construction documentation, tender and construction; and
- (B) note the estimated project forecast as outlined in Confidential Attachment D to the subject report.

Attachments

- Attachment A.** Location Plan and Site Photos
- Attachment B.** Concept Plan
- Attachment C.** Engagement Report
- Attachment D.** Financial Implications (Confidential)

Background

1. The City has an ongoing small parks and playgrounds improvement program. This program is for parks which need an upgrade or enhancement works, the replacement of end-of-life equipment, and to provide appropriate facilities for local residents.
2. Tote Park is bound by Joynton Avenue, Grandstand Parade, Austin Grove and Wolseley Grove in Zetland. It is owned by the City of Sydney. The playground is located on the southern edge of the park, on Austin Grove. The total area of the park is 3,050 square metres while the playground is approximately 200 square metres. The scope of works is limited to the playground.
3. The area that includes Tote Park is within the traditional homelands of the Gadigal people, part of the 29 clan groups of the Sydney metropolitan area that are collectively referred to as the Eora Nation.
4. An Indigenous Cultural Consultant has been engaged as part of this upgrade process, to ensure the project contributes to recognising the City's Indigenous heritage, celebrating Aboriginal and Torres Strait Islander cultures in the public domain, and enriching local knowledge about the cultural landscape.
5. Tote Park was established in the early 2000's as one of a series of parks within the Victoria Park Residential Precinct. Immediately prior to this the site had been part of the BMC car manufacturing site. Other parks include Joynton Park and Waluba Park.
6. Tote Park Playground was identified for an upgrade due to the playground's overall condition, including failing play equipment, seating and soft-fall surfacing. No broader park works are proposed.
7. The existing play equipment includes a double swing set, sand play, a series of timber balance beams and decks, and a large timber play structure. The current play offering provides a good range of play experiences including active, imaginary, dynamic, manipulative, and sensory.
8. There is no shade structure, however, shade is provided by a series of Jacaranda trees throughout the play area. Planting provides a buffer to the road and there is some well-established plant material within the playground which will be retained as part of the upgrade.
9. Tote Park is an off-leash dog park. Across the local government area dogs are not permitted within 10 metres of a playground. At Tote Park there is some conflict between playground users and dog owners. A low fence is located on Austin Grove to provide separation between the playground and footpath. There is currently no fence between the grass areas / off leash areas and the playground. A low fence is proposed between the play area and the lawn to improve separation between the different user groups.
10. Consideration has been given to the provision of play equipment in surrounding parks within a 500 metre radius, to ensure a coordinated network of facilities that caters for a broad range of park users.

Draft Concept Plan

11. A concept plan was developed for the works and community consultation was undertaken (refer to Attachment B).
12. The concept plan sets the overall layout. The key principles are:
 - (a) protect and enhance the existing landscape character;
 - (b) provide a local scale play space which improves the play opportunities for local children;
 - (c) provide a range of seating opportunities which encourage social interaction; and
 - (d) use simple, robust, high quality materials which reflect the local neighbourhood character.
13. The proposal includes the following works:
 - (a) extend paving to improve an accessible entry;
 - (b) replace existing rubber soft-fall;
 - (c) a new see-saw;
 - (d) a new play tower with slides for children (0-8);
 - (e) a new sand play area;
 - (f) replace existing double swings with similar;
 - (g) retain existing rock boulders and planting;
 - (h) replace and extend the existing timber balance beams and nature play elements;
 - (i) provide a new entry on the eastern edge;
 - (j) provide planting and a low fence on the park side including a defined entry point;
 - (k) replace existing bench seats with similar; and
 - (l) retain and protect the existing planting and fence on Austin Grove.
14. The Indigenous Cultural consultant has produced a 'Narratives' report, which broadly identifies project opportunities for the integration of Indigenous themes and narratives.
 - (a) The themes and narratives which were raised include:
 - (i) Tote Park is in the pathway between two key known Aboriginal communities - Redfern and La Perouse.
 - (ii) Exploration of the songline between neighbouring Gadigal and Bidjigal people.
 - (iii) Celebration of the life of Mum Shirl who is a local woman who is known for her work with children.

- (b) The engagement process highlighted that stakeholders were interested in seeing the demonstration of culture in the design of the parks. This was predominantly expressed through a desire to see Aboriginal themed inclusions in the design such as artwork, language, and native plants.
15. As part of the next stage of the upgrade, the consultant will review how the key themes and narratives should be implemented into the project design and delivery.
16. In response to community feedback, the following will be investigated and where possible incorporated into the detailed design as noted on Attachment B:
- (a) provision of a triple swing within the existing playground footprint;
 - (b) additional fencing to provide improved protection to the road; and
 - (c) provision of a play tower which is equivalent to the existing play tower in terms of play experience and capacity.
17. The following tree management and planting is proposed as part of the park works:
- (a) retain and protect all existing trees;
 - (b) improve the existing surface treatment around trees within the play area to manage tree health and minimise trip hazards;
 - (c) preparation of an Aborigicultural Impact Assessment and Tree Protection Plan to inform the detailed design and ensure appropriate construction methodology when installing equipment and soft-fall;
 - (d) retain existing planting within the play area and provide supplementary planting as required; and
 - (e) provide a low planted edge on the park side.
18. A Review of Environmental Factors (REF) will be lodged for the works in accordance with the Environmental Planning Assessment Act 1979 and the State Environmental Planning Policy Infrastructure 2007.

Key Implications

Strategic Alignment - Sustainable Sydney 2030

19. Sustainable Sydney 2030 is a vision for the sustainable development of the City to 2030 and beyond. It includes 10 strategic directions to guide the future of the City, as well as 10 targets against which to measure progress. This report is aligned with the following strategic directions and objectives:
 - (a) Direction 6 - Vibrant Local Communities and Economies - this project will provide improved open space infrastructure which meets the needs of a wide variety of user groups and provides opportunities for social interaction.
 - (b) Direction 9 - Sustainable Development, Renewal and Design - this project is part of a wider program of ongoing renewal of small parks across the local government area; it will provide improved quality of open space infrastructure.

Organisational Impact

20. This upgrade will provide an improved play experience and amenity for children, their carers and other community members visiting the park. The replacement of non-compliant assets represents a removal/mitigation of risk to the City. The assets will require ongoing maintenance.

Risks

21. Risks of not implementing the scope of these works include potential failure of play infrastructure and risk to the community. Daily inspections are carried out by the City as per standard parks and playground maintenance operations.
22. Risks of not implementing this scope of works could result in failure to meet community expectations.

Social / Cultural / Community

23. The playground within Tote Park is used by a range of community members including pre-schoolers, school aged children and their respective family and carers, as well as other members of the community which share the space for passive recreation.
24. The park and playground is a well-loved community asset, many residents use this park daily and the upgrade represents an investment in this community, providing opportunities for people of different ages and abilities to use the park alongside each other.
25. An Indigenous Cultural Consultant has been engaged as part of this upgrade process, to ensure the project contributes to recognising the City's Indigenous heritage, celebrating Aboriginal and Torres Strait Islander cultures in the public domain, and enriching local knowledge about the cultural landscape.

Environmental

26. Protection and enhancement of the existing planting through these works is in line with the Urban Forest Strategy.

Financial Implications

27. There are sufficient funds in the current year capital budget and future year forward estimates. Current cost estimates and financial implications are detailed in Confidential Attachment D.

Relevant Legislation

28. Local Government Act 1993 - Section 10A provides that a Council may close to the public so much of its meeting as comprises information that would, if disclosed, confer a commercial advantage on a person with whom the Council is conducting (or proposes to conduct) business.
29. Attachment D to the subject report contains confidential commercial information which if disclosed, would confer a commercial advantage on a person with whom Council is conducting (or proposes to conduct) business.
30. Discussion of the matter in an open meeting would, on balance, be contrary to the public interest because it would compromise Council's ability to negotiate fairly and commercially to achieve the best outcome for its rate payers.
31. Environmental Planning and Assessment Act 1979.
32. State Environmental Planning Policy Infrastructure 2007.
33. Sydney Local Environmental Plan 2012.
34. Disability Discrimination Act 1992.
35. Companion Animals Act 1998.

Critical Dates / Time Frames

36. Current Program Dates
 - (a) Council Approval of Concept Design October 2020
 - (b) Detailed Design October 2020
 - (c) Tender July 2021
 - (d) Construction Start November 2021
 - (e) Construction Duration 20 weeks

Options

37. Proceed with progression of improvement works as outline in this subject report including relevant approvals, preparation of construction documentation, tender and construction.
38. Project does not proceed - this option is not recommended as the current condition of the playground has a number of associated risks and compliance issues.

Public Consultation

39. Community consultation was undertaken as a two-part process: pre-consultation/early engagement and public consultation/exhibition. For a detailed description of the consultation process and findings refer to Attachment C.
40. A pre-consultation notification letter/email was issued to local stakeholders and 816 residents to notify them of the project, provide a link to a pre-consultation survey and offer to meet on site to discuss the proposed upgrade.
41. There were 50 submissions during the pre-consultation period.
42. The public consultation/exhibition involved the following:
 - (a) a letter sent to 816 residents about the concept design and inviting them to provide feedback;
 - (b) a stakeholder email sent to local stakeholders, inviting them to give feedback on the proposal. The email was sent to:
 - (i) Friends of Victoria Park;
 - (ii) Green Square Growers;
 - (iii) Sydney Local Health District;
 - (iv) Waranara Early Education Centre; and
 - (v) Green Square Storytime and Rhymetime;
 - (c) a webpage on SydneyYourSay showing the plans for the consultation from 20 July to 24 August 2020. Five hundred and nine individual users viewed the page;
 - (d) two Have Your Say A2 panels were installed in the park notifying the park users of the proposed works, providing contact details of the Design Manager and a web address to the SydneyYourSay page; and
 - (e) an online briefing was scheduled for 28 July. One person registered but did not attend.
43. There were 30 submissions received during the consultation period. This included submissions via email and the online feedback form.
44. The proposed works were well supported by the community and the responses highlighted that the playground and its play offering is well used and well loved.

45. There were three main areas of comments including: broader comments on the park amenity, specific requests around play equipment and fencing, and commentary around the conflict between dog users and the playground users. These comments have been addressed in the Engagement Report (Attachment D).
46. Key feedback included:
 - (a) Nine submissions requesting additional fencing around the playground. Additional fencing will be provided to address this.
 - (b) Six submissions requested additional swings to be provided. The City will investigate if an additional swing can be provided within the existing playground footprint.
 - (c) Four submissions requested additional regulatory signage about dogs. This will be considered as part of the park signage program of works.
 - (d) Three submissions requested the park become dog free.
 - (e) A number of submissions related to the proposed play structure with some suggestions for more challenging equipment, others wanting it to be similar to the existing and others requesting that separate structures were provided for two age groups 0-3- and 4-7. The play tower will be reviewed as part of the detailed design phase to ensure that the play experience is of equal value to the current structure.
47. In response to community feedback, the following will be investigated and where possible incorporated into a detailed design as noted on Attachment B:
 - (a) provision of a triple swing within the existing playground footprint;
 - (b) additional fencing to provide improved protection to the road; and
 - (c) provision of a play tower which is equivalent to the existing play tower in terms of play experience and capacity.
48. Indigenous community engagement and institution / organisational consultation was led by the Indigenous Cultural Consultant engaged as part of this upgrade process.
49. As part of the next stage of the upgrade, the Indigenous Cultural Consultant will work with the project team to identify how the key themes and narratives identified from the consultation should be implemented into the project design and delivery.

AMIT CHANAN

Director City Projects and Property

Helen Rogers, Design Manager

Attachment A

Location Plan and Site Photos



Existing timber play structure



**Existing timber balance beams
in poor repair**



**Existing double swing and turf
beyond**



**Fence and planting condition on
Austin Grove**



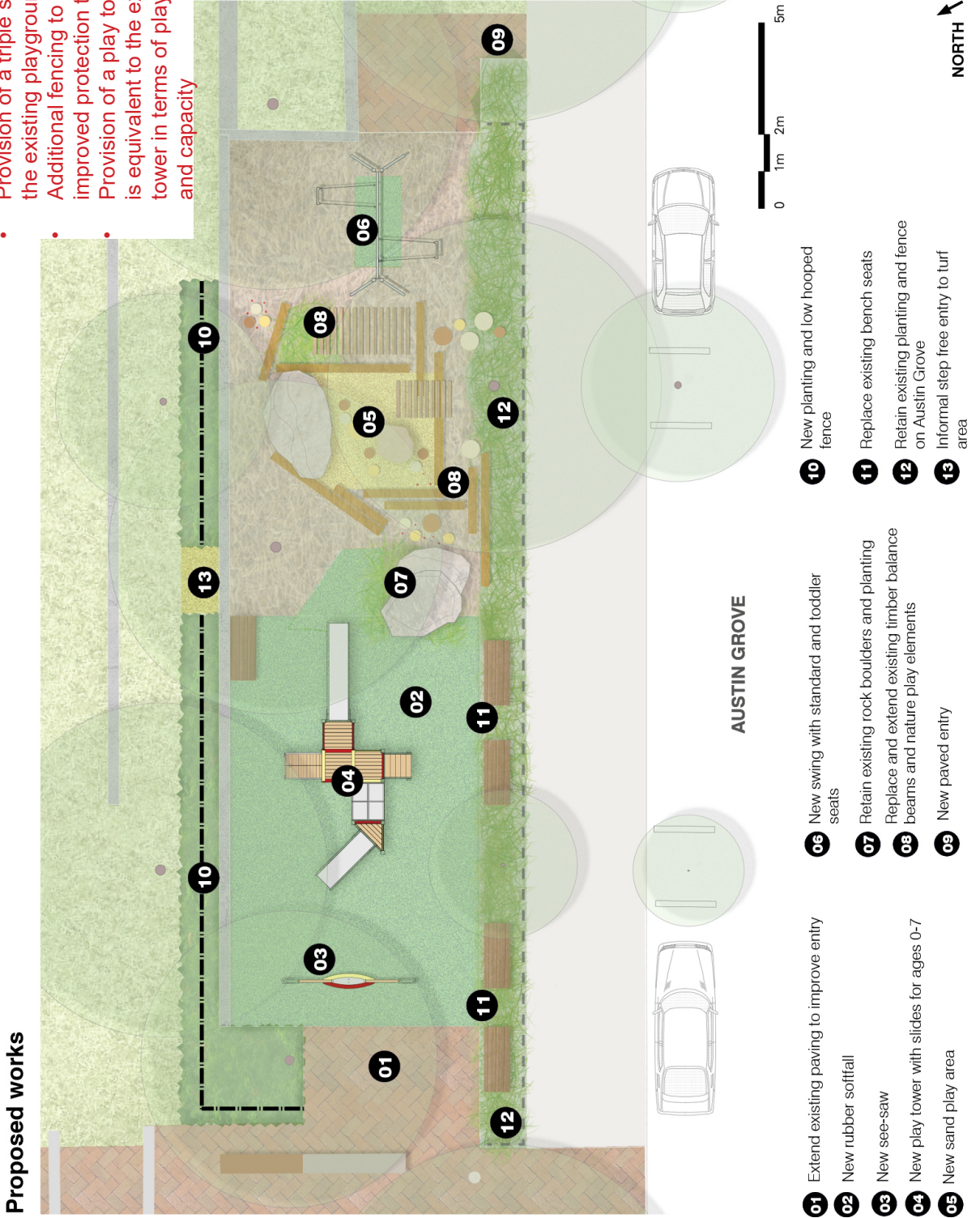
Attachment B

Concept Plan

Tote Park - Playground

In response to community feedback, the following will be investigated and where possible incorporated into the detailed design. These are as follows:

- Provision of a triple swing within the existing playground footprint
- Additional fencing to provide improved protection to the road
- Provision of a play tower which is equivalent to the existing play tower in terms of play experience and capacity



Proposed works



Scope of works limited to playground

Key

- Existing trees to be retained
- Brick paving
- Existing footpath
- Rubber soffit surface
- Mulch surface
- Sand
- Existing planting to be retained
- New planting
- Existing turf
- Existing concrete edging
- New fence
- Existing fence
- New bench seats

- 01 Extend existing paving to improve entry
- 02 New rubber soffit
- 03 New see-saw
- 04 New play tower with slides for ages 0-7
- 05 New sand play area

- 06 New swing with standard and toddler seats
- 07 Retain existing rock boulders and planting
- 08 Replace and extend existing limber balance beams and nature play elements
- 09 New paved entry

- 10 New planting and low hooped fence
- 11 Replace existing bench seats
- 12 Retain existing planting and fence on Austin Grove
- 13 Informal step free entry to turf area

Attachment C

Engagement Report



Engagement report

Tote Park playground, Zetland

October 2020

Contents

Background	3
Engagement summary	4
Key findings	5
Engagement activities	11
Appendix	13

Background

Over the next 10 years, we're upgrading more than 60 parks across the City of Sydney area, from small pocket parks to larger local parks.

Quality green open spaces are a high priority for our residents, workers and visitors. This network of park upgrades will create better quality open spaces for everyone to enjoy, help keep our city cooler, and support biodiversity in our local areas.

Prior to finalising the designs, we are consulting the community and stakeholders on these proposed park improvements. In 2020, we consulted on our stage 15 parks, which include:

- Minogue Crescent, Forest Lodge
- Peace Park, Chippendale
- **Tote Park, Zetland**
- Woolloomooloo Playground, Woolloomooloo
- Park on Lyons Road, Camperdown

Engagement summary

From 20 July to 24 August 2020, we asked the community for feedback on a concept plan to improve Tote Park playground in Zetland.

Consultation on the plan provided an opportunity for stakeholders and the community to review and comment on the design.

Consultation activities included online engagement, a letter to residents and project signage at the park.

This report outlines the community engagement activities that took place to support the consultation and summarises the key findings from the consultation.

Purpose of the engagement

The purpose of the engagement was to:

- gather feedback from stakeholders and the community about the proposed upgrade
 - determine the level of satisfaction with the revised concept design.
-

Outcomes from the engagement

Submissions received during consultation

We received a total of 30 submissions (via Survey Monkey, email and phone) during the public exhibition period. The Sydney Your Say page was visited 509 times during the consultation period.

Key findings

Early Engagement

Early engagement with residents took place in November 2019 to help inform the concept design. The early engagement survey had a high response rate with fifty submissions, of these submissions thirty percent of people use the park every week and a further thirty eight percent use the park every day.

The early engagement highlighted that the park is a well loved and well used park. Sixty two percent of people thought it was important or very important to provide formal play structures, eighty percent of people thought it important or very important to provide nature play opportunities and eighty percent of people thought it important or very important to provide a form of barrier protection to the playground. Repeated comments related to the provision of swings, shade, a range of play opportunities for young children, preference for additional protection from dogs and consideration of improving the sand play area.

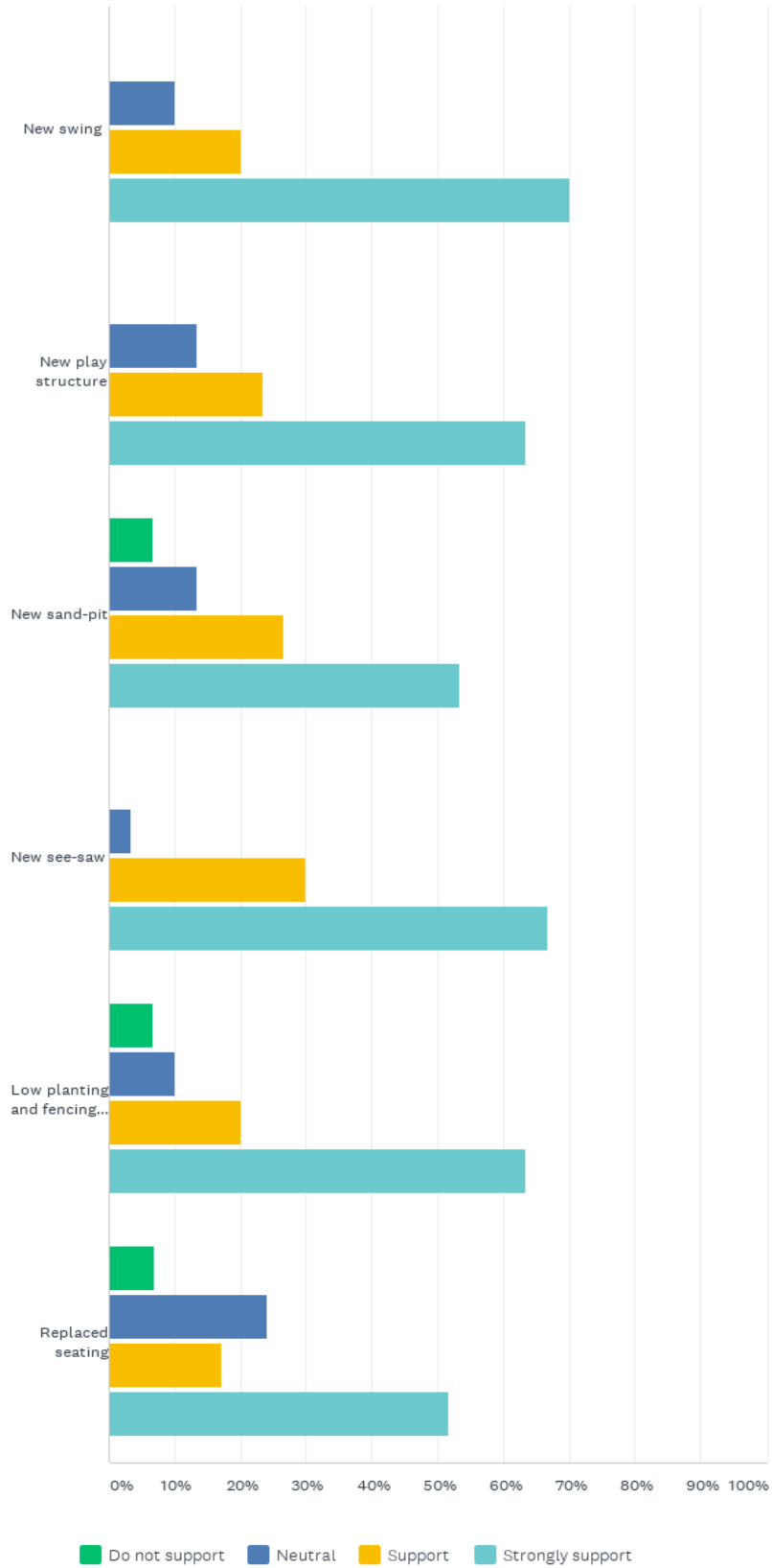
These comments are generally reflected in the draft concept plan which went to Public Exhibition.

Online feedback form - rating elements of the proposed upgrade

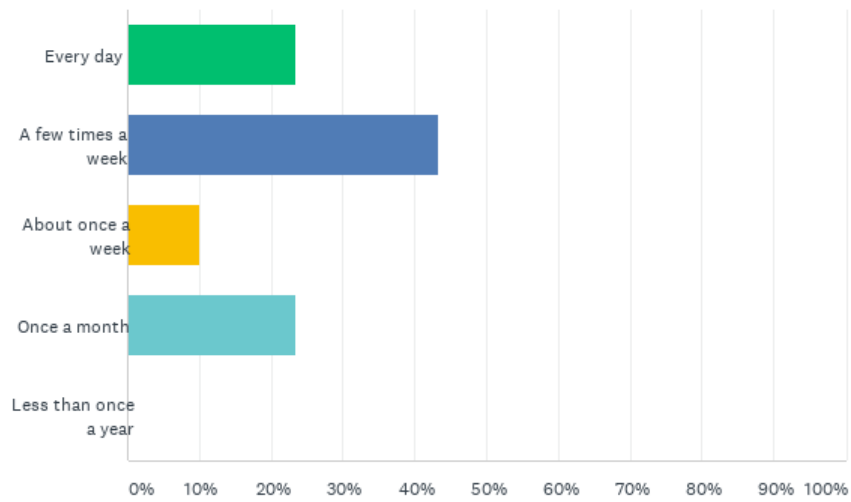
Respondents who completed the online feedback form were asked to rate how important elements of the proposed design were to them. The results are below

Engagement report

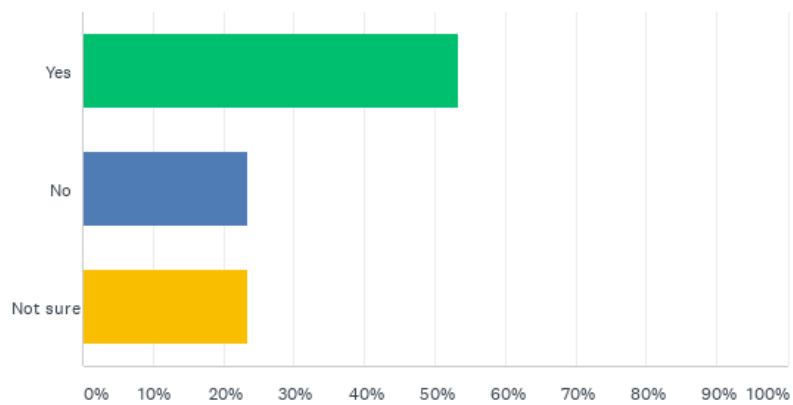
Q1 Do you support the following elements of the upgrade?



Q2 How often do you currently use the park?



Q3 Do you think that the upgrade would change your use of the park?



Subjects/topics raised in submissions

Several subjects/topics were raised in the feedback received. These were presented as concerns, suggestions and/or requests and are summarised below.

General		
Layout	Total	City of Sydney Response
Provide fencing to enclose the playground and protect children from road and dogs. One person suggested this could occur at one end rather than fully enclosing the playground.	9	The City will investigate providing additional fencing to the playground on Austin Grove side. At this stage fully enclosing the playground is not supported.
Increased and more visible signage of NO DOGS to playground area and ON LEASH ONLY for all other areas of the park	3	The City will review the current signage related to dogs within the park.
Provide a shade structure	3	The canopy of the existing trees within the playground area currently provides sufficient shade to the playground. The new play structure will include some roof structures which will provide additional shade.
Provide space next to any new or existing seating for a pram, wheelchair or walker	1	Equitable access and inclusive design is a priority to the City. The access arrangements within the playground will be reviewed as part of the detailed design phase.
Provide a BBQ and a hand washing sink	1	The scope of the upgrade is limited to the playground only. BBQ facilities will not be included as part of this upgrade.
Have enough room for birthday party on the pavement.	1	Access and gathering spaces will be reviewed as part of the detailed design phase.
Add water fountain in closer vicinity to the play equipment	1	The City will review the provision of the water fountain as part of the detailed design.
Add a rubbish bin in closer vicinity to the play equipment. One person suggested that the bins needed to be emptied more frequently.	2	The City will review the provision of the rubbish bins as part of the detailed design.
Play space	Total	City of Sydney Response
Provide additional swings instead of replacement. One person suggested this could be a nest swing.	6	The City will investigate if additional swings can be included in the upgrade within the existing footprint of the playground.
Provide a hopscotch	1	Noted. Not currently being considered as part of this scope.

Engagement report

Did not support the sandpit	1	Noted.
Add musical or sensory elements around the sand pit play area	2	Noted. Not currently being considered as part of this scope due to the proximity to residences.
Add sensory obstacle course with different stones, surfaces, heights	1	The area around the sand-pit area will provide some varied sensory experiences as well as balance beams and steppers.
Ensure the new play structure/play tower will not be smaller than existing	1	Further development of the proposed play elements will be completed as part of the detailed design phase.
Provide accessible surfacing and ensure that the equipment is designed for equitable play.	1	
Provide additional climbing/vertical structures and more challenging structures	3	The City aims to provide opportunities for children of different abilities and ages (0-8) to play alongside each other. The City will work to ensure that the new play structure will retain the existing play experiences and capacity of the existing play structure.
Provide play opportunities for children of a range of ages. One person suggested separate play structures for children of different ages, 0 to 3 and 4 to 7 years.	2	
Provide a cubby house	1	
Provide a more complex slide area	1	
Provide innovative design to the playground	1	
Review tree-roots of jacaranda and ensure no trip hazards.	1	The proposed works will reduce the impact on the existing trees and roots. The trip hazards will be removed as part of these works by changing the surface material in these locations.
Re-instate the water play element	1	Due to the ongoing maintenance and water usage the water play element will not be reinstated as part of these works.
Planting	Total	City of Sydney Response
Ensure the trees are retained	1	All trees will be retained as part of these works.
Project scope/timing/budget	Total	City of Sydney Response
Concern about the duration of the park being in construction and therefore not useable.	1	Noted. The City aims to minimise the construction duration to minimise impact to residents.

Outside scope	Total	City of Sydney Response
To make it be a dog free park	3	Noted. No change to the existing arrangement is proposed as part of these works.
Old building to be repurposed as a children's/ community activity centre or little museum for children	1	Not being considered as part of this scope of works.
Turn little kiosk turns into a cafe	1	Not being considered as part of this scope of works.
Improve the toilet facilities.	1	Comment has been passed onto the Parks Maintenance team.
Provide play equipment at Joynton Park	1	Comment has been passed onto the Parks Program Manager.
Other Parks mentioned as design examples		
Waluba Park, Mary Obrien Playground, Berry Reserve- Narrabeen		

Consultation with Aboriginal and Torres Strait Islander Communities

A specialised indigenous consultant was engaged by the City's landscape architect to provide cultural advice and input on the design. Ideas raised during the indigenous consultation were:

- The significance of songlines and the story of water are key components in the inner City that can be able to all park projects and it would be good to see some connectivity between all parks.
- The park is in the pathway between two key known Aboriginal communities - Redfern and La Perouse. This idea could be complemented with art on the play equipment or shade cover with stories of the sky and connection to the songline between neighbouring Gadigal and Bidjigal people.
- Potential to engage an Aboriginal artist who can interpret the work.

These ideas will be explored further during detailed design.

Engagement activities

Early engagement activities

Several activities were undertaken to engage residents living in the immediate area and key stakeholders to inform the development of the concept design.

1. Early engagement survey

From 25 November - 9 December, adjacent residents and key stakeholders were invited to fill out an early engagement survey or email feedback to the Sydney Your Say email address. Fifty Submissions were received.

2. Email to key stakeholders

Six groups were contacted about the proposal during the early engagement phase, including Friends of Victoria Park, Green Square Growers, Sydney Local Health District, Waranara Early Education Centre and Green Square Storytime and Rhymetime

3. Letter to residents

During the early engagement phase, a letter about the proposal was distributed to 816 residents living immediately adjacent to the park.

4. Children's Consultation – Green Square Storytime/Rhymetime

The project team met with Green Square storytime/rhymetime to share the pre-consultation survey.

Public exhibition activities

Before consultation began,

1. Sydney Your Say webpage

A Sydney Your Say webpage, <https://www.cityofsydney.nsw.gov.au/council/your-say/park-playground-upgrades/improving-tote-park-playground-zetland> was created. The page included an electronic copy of the revised concept design, survey and other key information about the consultation.

2. Online feedback form via Survey Monkey

The community and stakeholders were able to give feedback using an online feedback form. A link to the feedback form was provided on the Sydney Your Say website.

3. Sydney Your Say e-News

The consultation was included in the Sydney Your Say on 11 August 2020 e-Newsletter (7,348 subscribers).

4. Consultation letter

A letter was posted to residents, inviting them to give feedback on the proposal. 816 letters were distributed.

5. Notification email

An email was sent to key stakeholders: Friends of Victoria Park, Green Square Growers, Sydney Local Health District, Waranara Early Education Centre and Green Square Storytime and Rhymetime

6. On site signage

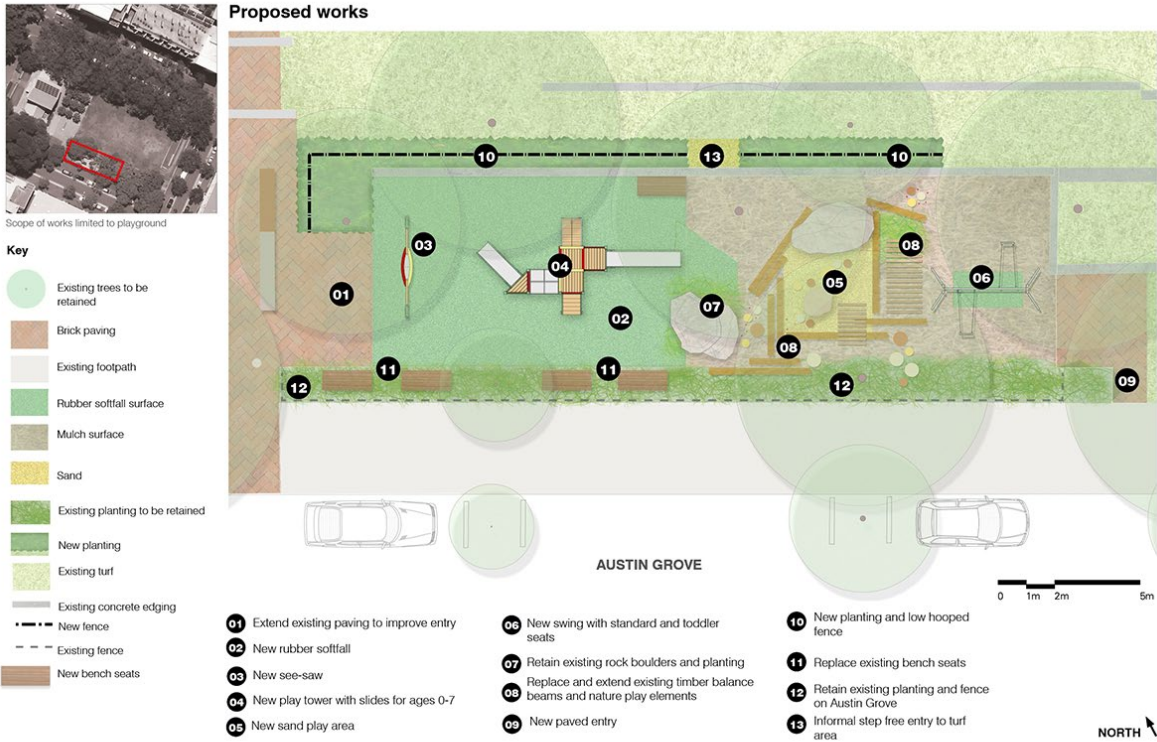
Two notice boards were installed at Tote Park, inviting people to give feedback on the proposal.

7. Community meeting

A Zoom meeting was scheduled for 28 July, 1 person registered and attended the briefing.

Appendix

Appendix A: concept design



Tote Park playground upgrade - community consultation plan

Improving Tote Park playground, Zetland



Under review

Contributions to this consultation are closed for evaluation and review. The project team will report back on key outcomes.

We plan to upgrade the playground at Tote Park, Zetland and invite your feedback on the proposed design.

Over the next 10 years, we will upgrade more than 60 parks across the City of Sydney area, from small pocket parks to larger local parks.

Quality green open spaces are a priority for our residents, workers and visitors. These park upgrades will create better quality open spaces for everyone to enjoy, help keep our city cooler, and support biodiversity in our local areas.

The proposal for Tote Park playground includes:

- an updated play structure and swings and a new see-saw
- renewed balance beam and nature play area, including a new sand play area
- more seating
- new low plants and a fence between the play area and turf.

How you can give feedback

You can [view the proposed design](#) and give your feedback by completing an online feedback form .

[Online form](#)

Consultation closes at **5pm on Monday 24 August 2020**.

Feedback may be published in publicly available reports at the end of the consultation period. Your name or organisation's name may appear in these reports with your feedback attributed. If you would like your feedback to be kept confidential, please let us know when making your submission.

Other ways to give your feedback

We want to make sure everybody has the opportunity to provide ideas and feedback.

If you prefer to talk to us in person, please contact the City of Sydney officer listed in contacts.

If you are Deaf or have a hearing or speech impairment you can contact us through the [National Relay Service](#) . You will need to provide our phone number 02 9265 9333.

If you need an interpreter you can contact us through the [Translating and Interpreting Service](#) on 131 450. You will need to provide our phone number 02 9265 9333.

Key dates

Public consultation period
20 July to 24 August 2020

Online briefing
28 July 2020

Contacts

Lucy Farley
Design Manager

02 9265 9333
sydneyyoursay@cityofsydney.nsw.gov.au

Related projects

- [Park and playground upgrades](#)

Links

[Online form](#)



[Park upgrade plans](#)

Do you live, visit or work in Woolloomooloo, Zetland, Chippendale, Forest Lodge or Camperdown? We're upgrading parks and playgrounds in your local area. Let us know what you think of the proposed designs:

- [Peace Park, Chippendale](#)
- [Tote Park playground, Zetland](#)
- [Minogue Crescent Reserve, Forest Lodge](#)
- [Woolloomooloo Playground, Woolloomooloo](#)
- [Park on Lyons Road, Camperdown](#)

[Read more](#)

Appendix C: Consultation letter



20 July 2020

Improving Tote Park playground, Zetland

The City of Sydney plans to upgrade the Tote Park playground, Zetland and invite your feedback on the proposed design.

Over the next 10 years, we will upgrade more than 60 parks across the City of Sydney area, from small pocket parks to larger local parks. These park upgrades will create better-quality open spaces for everyone to enjoy, help keep our city cooler, and support biodiversity in our local areas.

The proposal for Tote Park playground includes:

- an updated play structure and swings and a new see-saw
- renewed balance beam and nature play area, including a new sand play area
- more seating
- new low plants and a fence between the play area and turf.

How to give feedback on the design

We know our residents, workers and visitors are focused on physical distancing and health and wellbeing, and many are experiencing economic stress. Visit cityofsydney.nsw.gov.au/covid19-response for more information on how the City is responding to the Covid-19 pandemic.

While how our staff will consult with you may look a little different, we still want to hear from you and will provide plenty of opportunities to have your say on the projects and programs that affect you.

The proposed design is included with this letter. You can give feedback on this proposal at cityofsydney.nsw.gov.au/park-playground-upgrades by **5pm on 17 August 2020**.

We also invite you to a briefing on the proposed design with the project team via a Zoom video call on **Tuesday 28 July from 5.30pm to 6pm**. Register to join this meeting at the link above by 5pm on Sunday 26 July. After you register, we will provide you with more information to set up the video call.

Next steps

We will report all feedback and any resulting design changes to Council. If Council resolves to proceed with the upgrade, we will continue to detailed design. We will keep you updated on the progress of this project.

Sydney Town Hall
483 George Street Sydney NSW 2000
Phone 02 9265 9229 Fax 02 9265 9328
cmoore@cityofsydney.nsw.gov.au

Sustainable
Sydney 2030

The time for action on
climate change is now

© OLM2020 004177 TOTE PARK PLAYGROUND

2

For more information about the project, please contact Helen Rogers, City Design Manager, on 9265 9333 or at sydneyyoursay@cityofsydney.nsw.gov.au.

Yours sincerely



Have your say

Improving the playground at Tote Park

We plan to upgrade the playground at Tote Park and invite your feedback on the proposed design.

Over the next 10 years, we're upgrading more than 60 parks across the City of Sydney, from small pocket parks to larger local parks.

Quality green open spaces are a high priority for our residents, workers and visitors. This network of park upgrades will create better quality open spaces for everyone to enjoy, help keep our city cooler, and support biodiversity in our local areas.

You can view the proposed design and give feedback at cityofsydney.nsw.gov.au/park-playground-upgrades

Consultation closes at **5pm on Tuesday 11 August 2020.**

We also invite you to a briefing on the proposed design with the project team via a Zoom video call on **Tuesday 28 July from 5.30pm to 6pm**. Register to join this meeting at cityofsydney.nsw.gov.au/park-playground-upgrades by **5pm on Sunday 26 July**. We will provide you with more information to set up the video call.

For more information about the project, please contact Helen Rogers, Design Manager on **02 9265 9333** or email sydneyyoursay@cityofsydney.nsw.gov.au

Document is Restricted